



Cam Units CRX  
Schieber CRX  
Unità a Camme CRX



**OMCR**<sup>®</sup>  
STANDARD DIE COMPONENTS



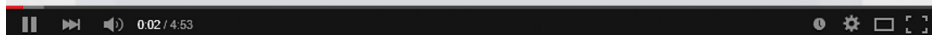
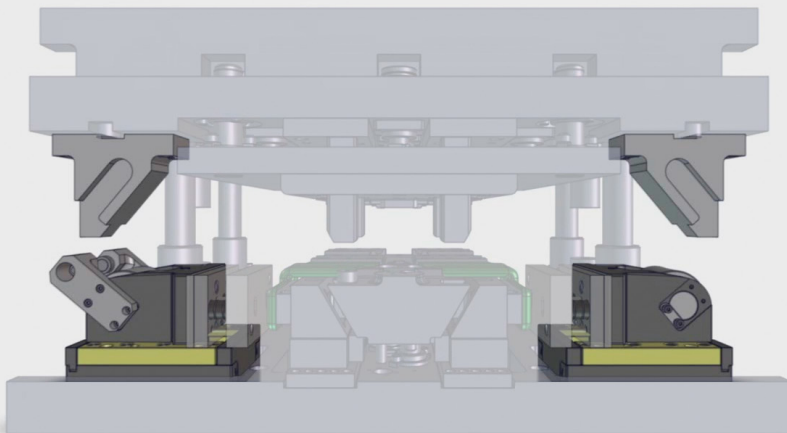
UTILITY MODEL 20 2014 90 2313403

OMCR CODE	Work Angle	Slider Width (mm)	Work Area W x H (mm)	Max Work Force 10 <sup>6</sup> cycles (kN)	Extraction Force (kN)	Page number
	$\beta$			F <sub>s</sub>	F <sub>f</sub>	
CRX01	-15°÷50°	78	78x63	45	2,5÷3,4	894
CRX03	-15°÷50°	98	98x63	76	3,4÷3,6	900
CRX05	-15°÷50°	118	118x74	142	6,36÷6,46	906
CRX15	-15°÷50°	170	170x94	166	6,45÷6,61	912
CRX20	-15°÷50°	240	240x110	258	9,29÷9,38	918

ROLLER CAM DRIVER - TREIBER FÜR ROLLENSCHIEBER - CUNEO PER CAMME A RULLO

OMCR CODE	Roller Cam Model	Work Angle $\beta$	Page number
DCRX0100	CRX01	-15°÷50° (5° steps)	924
DCRX0305	CRX03 - CRX05	-15°÷50° (5° steps)	926
DCRX1520	CRX15 - CRX20	-15°÷50° (5° steps)	928

100% SAFETY WITH POSITIVE RETURN - 100 % SICHERHEIT MIT DER ZWANGSRÜCKHOLUNG  
100% SICURA CON IL GANCIO DI RITORNO



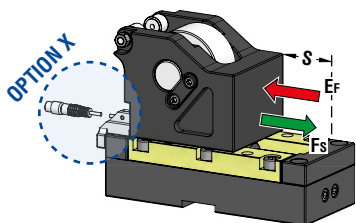
CRX: how does it work?  
CRX: wie funktioniert es?  
CRX: come funziona?



Cam Units CRX



## ROLLER CAM UNIT - ROLLENSCHIEBER - CAMMA A RULLO



OMCR CODE	Stroke (mm)	Max Work Force (kN)	Extraction Force (kN)
			Ef Gas Spring
CRX01.030	30	45	2,5
CRX01.050	48	45	3,4

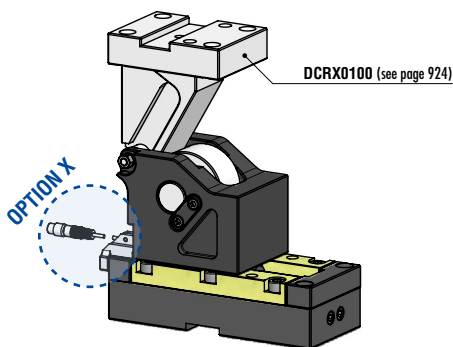


WEB

WEB

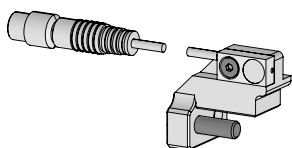
P.682

### With Driver - OPTION DRIVER



OPTION DRIVER	Work angle ( $\beta$ )
H15	-15°
H10	-10°
H05	-5°
000	0
L05	5°
L10	10°
L15	15°
L20	20°
L25	25°
L30	30°
L35	35°
L40	40°
L45	45°
L50	50°

### Back Position Check - OPTION X



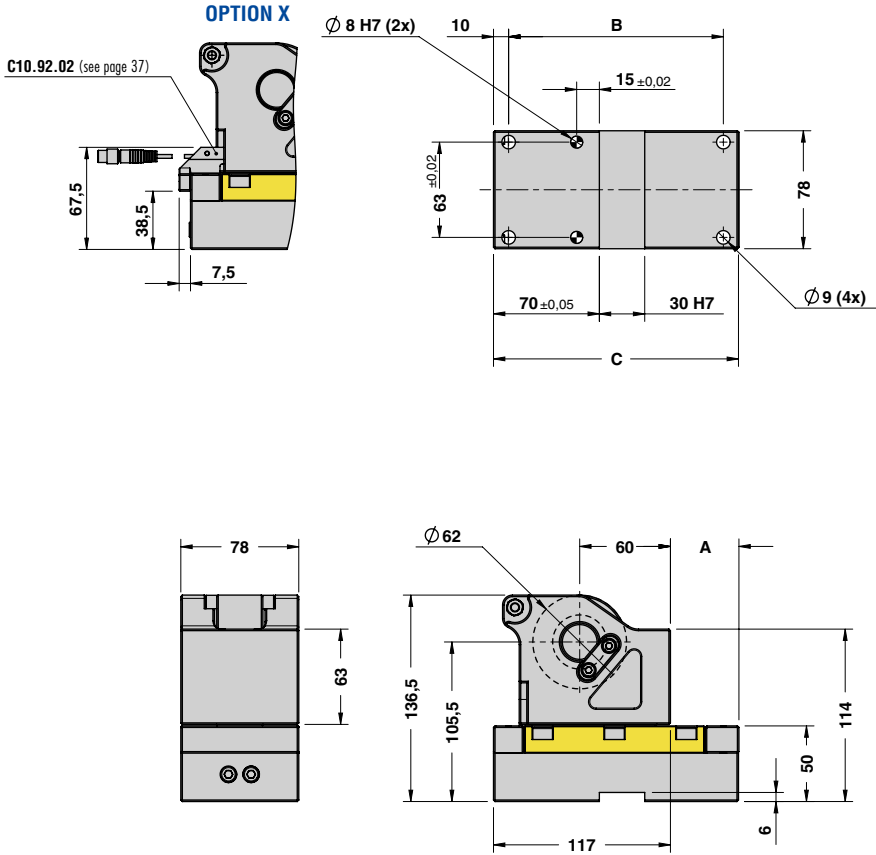
Montable on right or left side  
auf rechte bzw. linke Seite montierbar  
Montabile sul lato destro e sinistro

STOCK	ORDER EXAMPLE	Art.	OPTION DRIVER	OPTION X
		CRX01.050	000	X

OMCR CODE	Stroke (mm)	Overall Dimensions (mm)		
	S	A	B	C
CRX01.030	30	45	142	162
CRX01.050	48	65	162	182



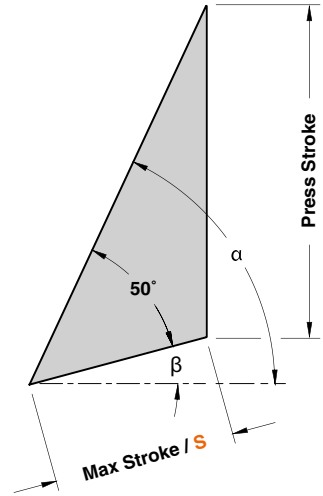
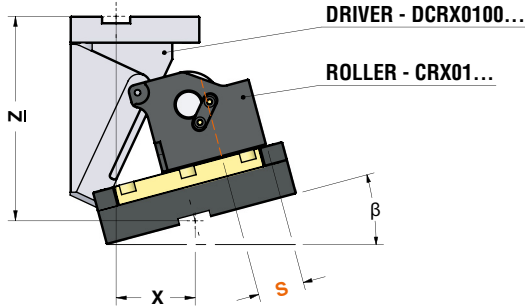
ROLLER CAM UNIT - ROLLENSCHIEBER - CAMMA A RULLO



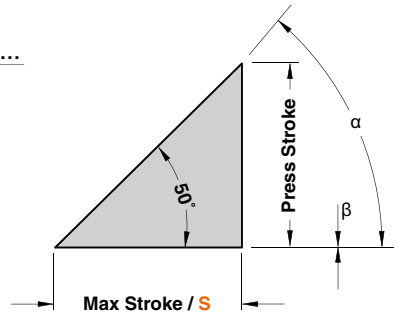
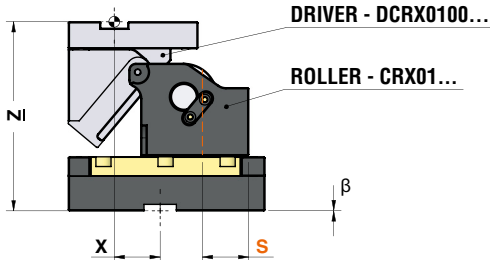


ROLLER CAM UNIT - ROLLENSCHIEBER - CAMMA A RULLO

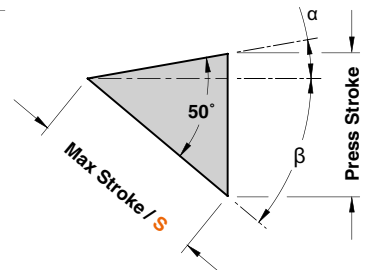
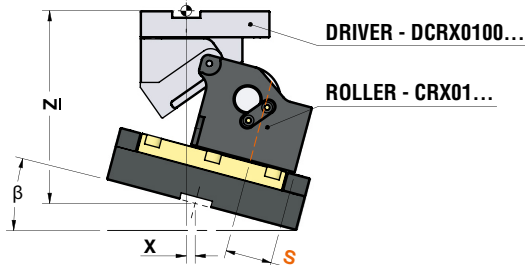
WORK ANGLE ( $\beta$ ) FROM  $-5^\circ$  TO  $-15^\circ$



WORK ANGLE ( $\beta$ )= $0^\circ$



WORK ANGLE ( $\beta$ ) FROM  $5^\circ$  TO  $50^\circ$

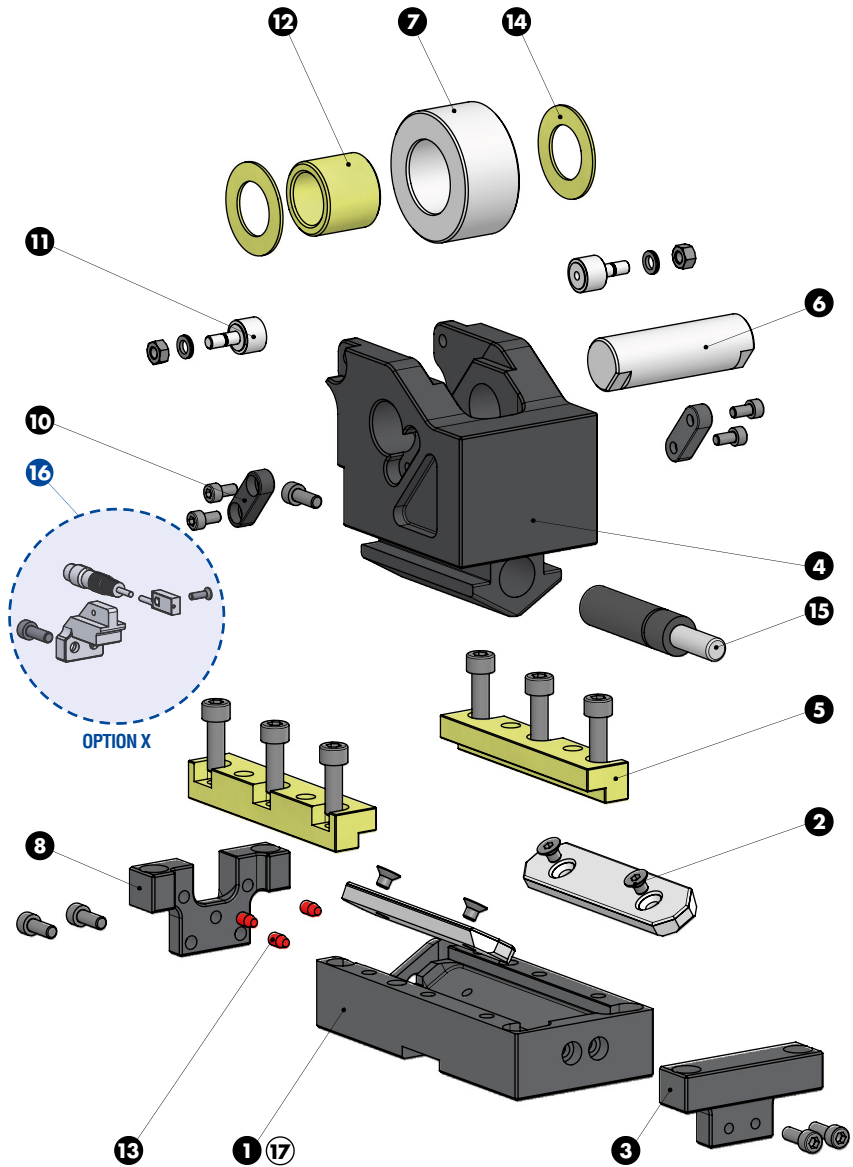




## ROLLER CAM UNIT - ROLLENSCHIEBER - CAMMA A RULLO

\*For more info see page 894 / Weitere Informationen finden Sie auf der Seite 894 / Per maggiori informazioni consultare la pagina 894

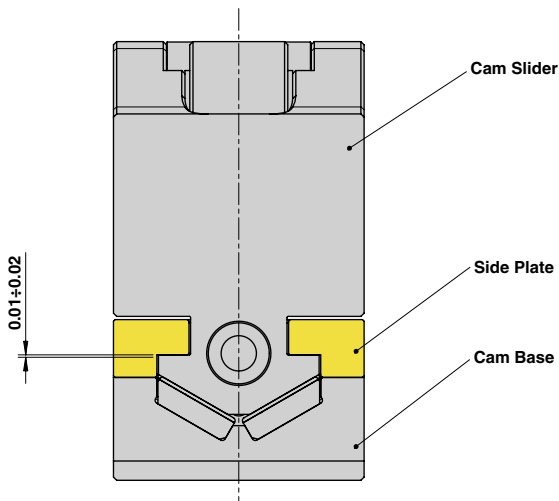
ROLLER CAM CODE	Work Angle $\beta$	$\alpha$	Max Stroke S (mm)	Press Stroke (mm)	*CAM DRIVER CODE	X (mm)	Z (mm)
CRX01.030	-15°	65°	30	54,4	DCRX0100.30.H15	73,20	175,60
	-10°	60°	30	46,0	DCRX0100.30.H10	63,49	174,00
	-5°	55°	30	40,1	DCRX0100.30.H05	53,23	169,90
	0°	50°	30	35,8	DCRX0100.30.000	42,50	175,00
	5°	45°	30	32,5	DCRX0100.30.L05	31,37	172,50
	10°	40°	30	30,0	DCRX0100.30.L10	19,93	175,00
	15°	35°	30	28,1	DCRX0100.30.L15	8,27	176,94
	20°	30°	30	26,5	DCRX0100.30.L20	-3,52	178,46
	25°	25°	30	25,4	DCRX0100.30.L25	-15,36	174,64
	30°	20°	30	24,5	DCRX0100.30.L30	-27,15	173,54
	35°	15°	30	23,8	DCRX0100.30.L35	-38,80	171,21
	40°	10°	30	23,3	DCRX0100.30.L40	-50,23	166,66
	45°	5°	30	23,1	DCRX0100.30.L45	-61,35	161,93
50°	0°	30	23,0	DCRX0100.30.L50	-72,07	157,02	
CRX01.050	-15°	65°	50	87,01	DCRX0100.50.H15	73,20	192,99
	-10°	60°	50	73,54	DCRX0100.50.H10	63,49	186,46
	-5°	55°	50	64,11	DCRX0100.50.H05	53,23	190,09
	0°	50°	50	57,2	DCRX0100.50.000	42,50	177,38
	5°	45°	50	52	DCRX0100.50.L05	31,37	182,00
	10°	40°	50	48	DCRX0100.50.L10	19,93	177,00
	15°	35°	50	44,89	DCRX0100.50.L15	8,27	179,81
	20°	30°	50	42,46	DCRX0100.50.L20	-3,52	177,54
	25°	25°	50	40,57	DCRX0100.50.L25	-15,36	174,43
	30°	20°	50	39,13	DCRX0100.50.L30	-27,15	170,87
	35°	15°	50	38,07	DCRX0100.50.L35	-38,80	171,93
	40°	10°	50	37,34	DCRX0100.50.L40	-50,23	162,66
	45°	5°	50	36,91	DCRX0100.50.L45	-61,35	158,09
50°	0°	50	36,77	DCRX0100.50.L50	-72,07	153,23	

**ROLLER CAM UNIT - ROLLENSCHIEBER - CAMMA A RULLO**



ROLLER CAM UNIT - ROLLENSCHIEBER - CAMMA A RULLO

SLIDER STRUCTURE AND CLEARANCES



Cam Units CRX

PART LIST

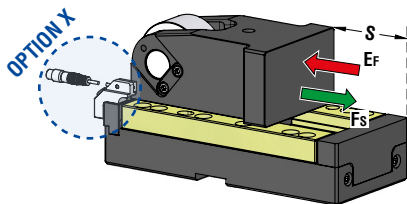
Particular number	Description	Material	Quantity
1	Cam Base	CK45	1
2	Wear Plate	St42 + Syntered layer	2
3	Spring Stopper Plate	CK45	1
4	Cam Slider	CK45	1
5	Side Plate	CuZn25Al5 + Graphite - HB > 190	2
6	Pin	16NiCrMo4	1
7	Roller	100Cr6	1
8	Stopper Plate	CK45	1
10	Key	CK45	2
11	Roller KRV16PPA	CK45	2
12	Self-Lubricating Bush	CuZn25Al5 + Graphite - HB > 190	1
13	Elastomer Cap	Elastomer 92SH	3
14	Washer PCMW 264401.5M	-	2
15	Gas Spring	-	1
16	Back Position Check - <b>OPTION X</b>	-	1
17	Cam Base Fixing Screws M8x30 DIN 912	-	4





**ROLLER CAM UNIT - ROLLENSCHIEBER - CAMMA A RULLO**

**Without Positive Return - OPTION K**



OMCR CODE	Stroke (mm)	Max Work Force (kN)	Extraction Force (kN)	
			Ef	Gas Spring
	S	Fs		
CRX03.050	48	76	3,4	
CRX03.080	78	76	3,4	
CRX03.100	98	76	3,6	

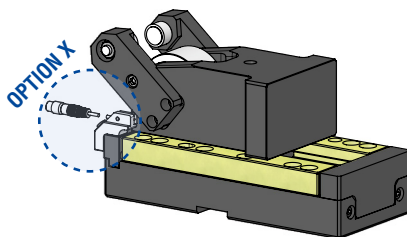


WEB

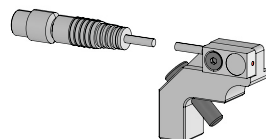
WEB

P.682

**With Positive Return - OPTION P**

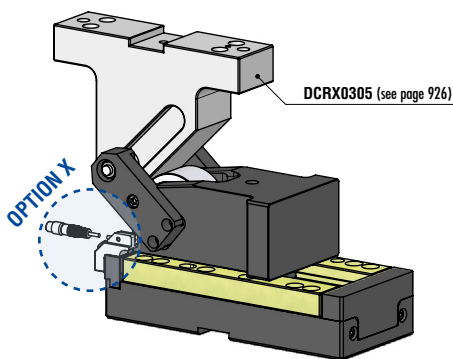


**Back Position Check - OPTION X**



Montable on right or left side  
auf rechte bzw. linke Seite montierbar  
Montabile sul lato destro e sinistro

**With Driver - OPTION DRIVER**



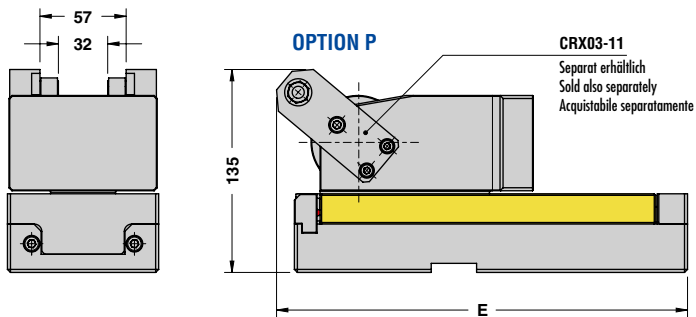
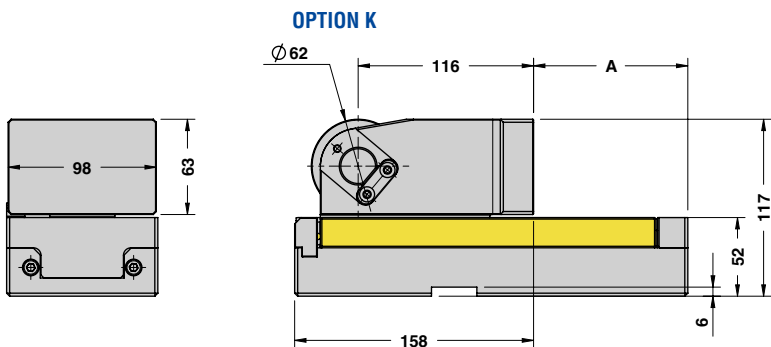
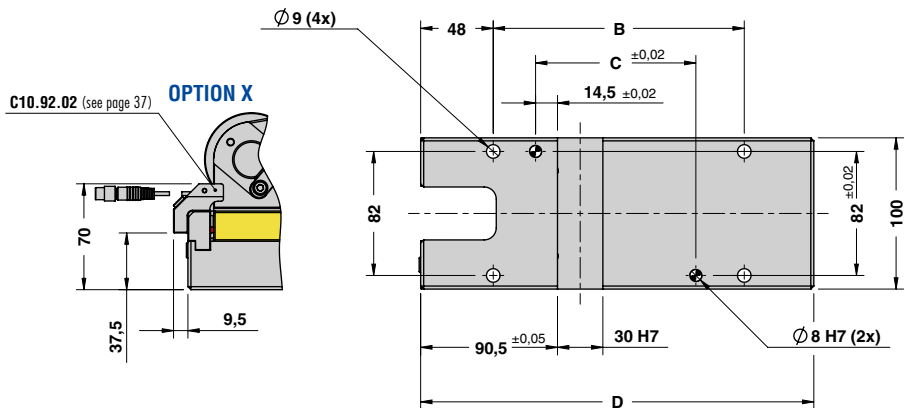
OPTION DRIVER	Work angle (β)
H15	-15°
H10	-10°
H05	-5°
000	0
L05	5°
L10	10°
L15	15°
L20	20°
L25	25°
L30	30°
L35	35°
L40	40°
L45	45°
L50	50°

STOCK	ORDER EXAMPLE	Art.	OPTION K-P	OPTION DRIVER	OPTION X
		CRX03.080	P	000	X

OMCR CODE	Stroke (mm)	Overall Dimensions (mm)				
		S	A	B	C	D
CRX03.050	48	42	116	56	200	212
CRX03.080	78	72	146	86	230	242
CRX03.100	98	102	166	106	260	272



ROLLER CAM UNIT - ROLLENSCHIEBER - CAMMA A RULLO

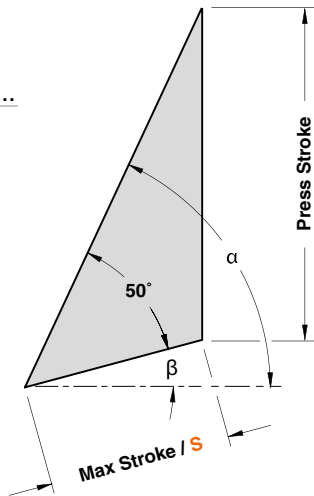
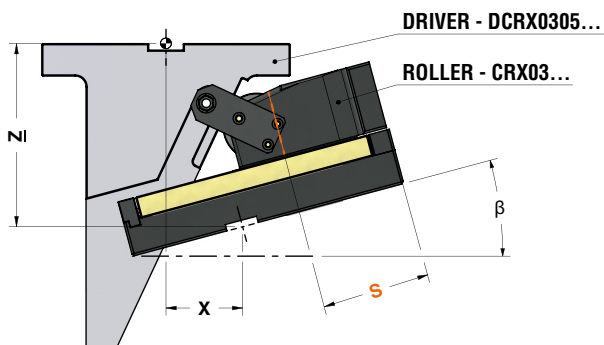


Cam Units CRX

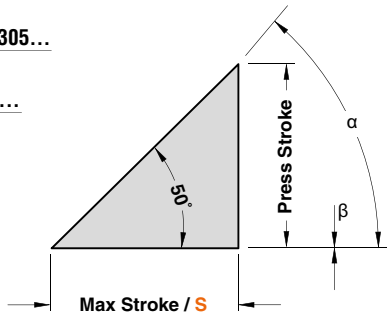
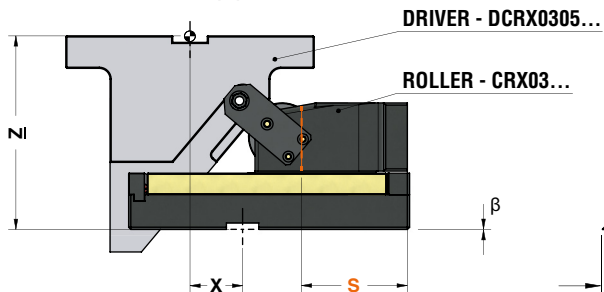


ROLLER CAM UNIT - ROLLENSCHIEBER - CAMMA A RULLO

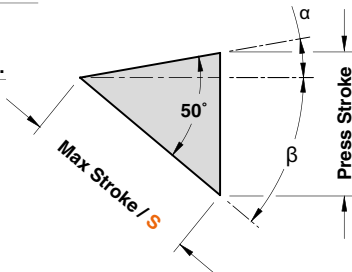
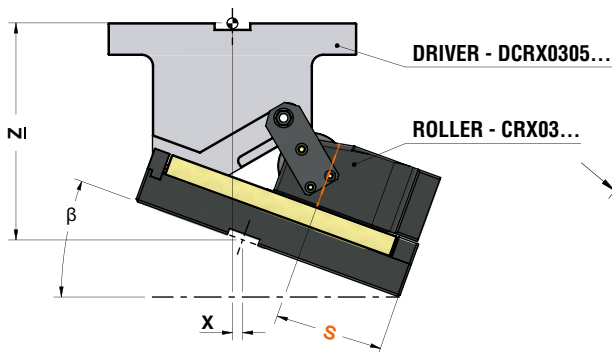
WORK ANGLE ( $\beta$ ) FROM  $-5^\circ$  TO  $-15^\circ$



WORK ANGLE ( $\beta$ ) =  $0^\circ$



WORK ANGLE ( $\beta$ ) FROM  $5^\circ$  TO  $50^\circ$





## ROLLER CAM UNIT - ROLLENSCHIEBER - CAMMA A RULLO

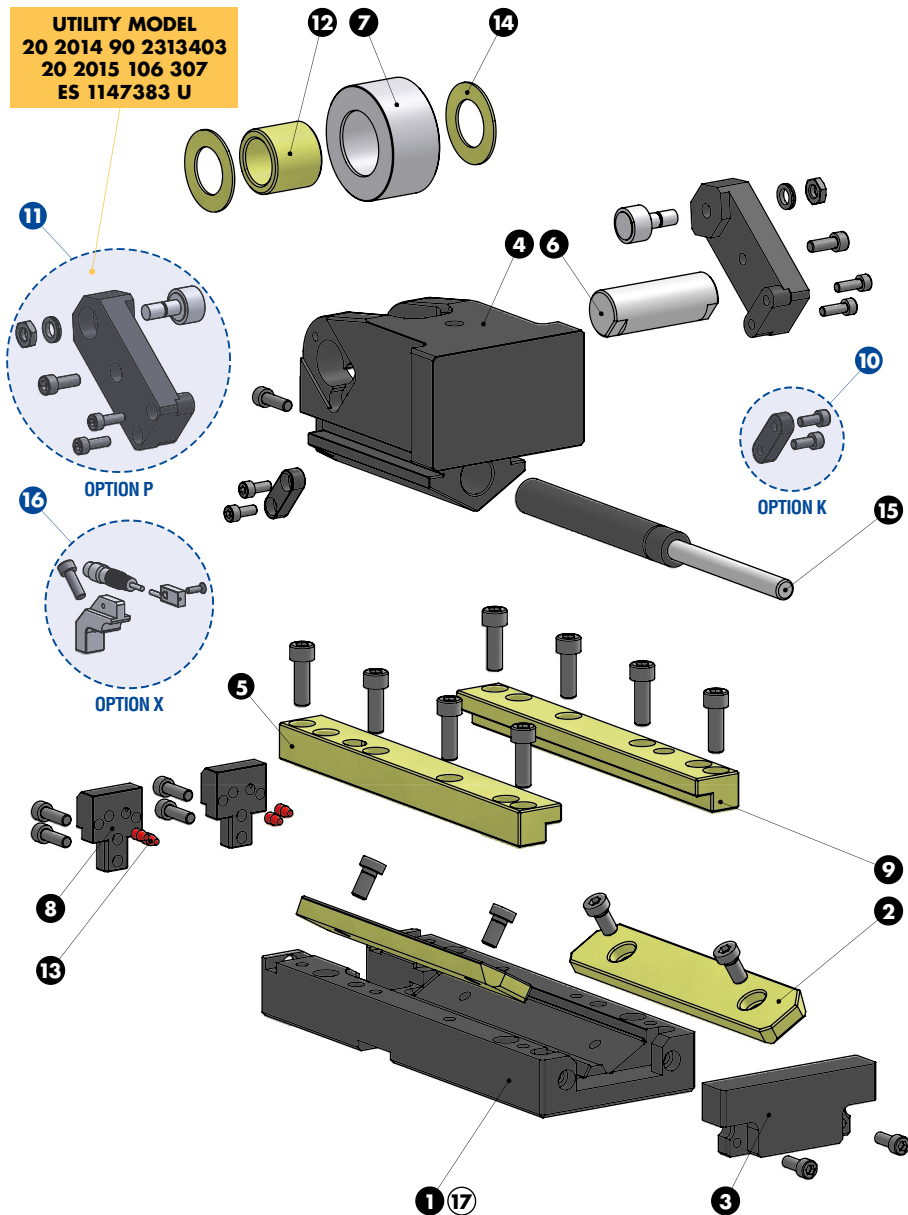
\*For more info see page 926 / Weitere Informationen finden Sie auf der Seite 926 / Per maggiori informazioni consultare la pagina 926

ROLLER CAM CODE	Work Angle $\beta$	$\alpha$	Max Stroke S (mm)	Press Stroke (mm)	*CAM DRIVER CODE	X (mm)	Z (mm)
CRX03.050	-15°	65°	50	87,01	DCRX0305.50.H15	95,92	168,66
	-10°	60°	50	73,54	DCRX0305.50.H10	89,32	171,96
	-5°	55°	50	64,11	DCRX0305.50.H05	81,88	180,63
	0°	50°	50	57,2	DCRX0305.50.000	73,68	186,06
	5°	45°	50	52	DCRX0305.50.L05	64,75	189,06
	10°	40°	50	48	DCRX0305.50.L10	55,19	195,04
	15°	35°	50	44,89	DCRX0305.50.L15	45,05	199,27
	20°	30°	50	42,46	DCRX0305.50.L20	34,42	201,92
	25°	25°	50	40,57	DCRX0305.50.L25	23,37	198,08
	30°	20°	50	39,13	DCRX0305.50.L30	11,99	192,81
	35°	15°	50	38,07	DCRX0305.50.L35	0,37	191,16
	40°	10°	50	37,34	DCRX0305.50.L40	-11,40	188,15
	45°	5°	50	36,91	DCRX0305.50.L45	-23,25	183,81
50°	0°	50	36,77	DCRX0305.50.L50	-35,06	178,15	
CRX03.080	-15°	65°	80	141,38	DCRX0305.80.H15	70,92	209,28
	-10°	60°	80	119,5	DCRX0305.80.H10	64,32	211,00
	-5°	55°	80	104,17	DCRX0305.80.H05	56,88	205,56
	0°	50°	80	92,96	DCRX0305.80.000	48,68	205,30
	5°	45°	80	84,5	DCRX0305.80.L05	39,75	201,56
	10°	40°	80	78	DCRX0305.80.L10	30,19	210,04
	15°	35°	80	72,94	DCRX0305.80.L15	20,05	216,22
	20°	30°	80	69	DCRX0305.80.L20	9,42	220,38
	25°	25°	80	65,93	DCRX0305.80.L25	-1,63	217,72
	30°	20°	80	63,59	DCRX0305.80.L30	-13,01	213,35
	35°	15°	80	61,86	DCRX0305.80.L35	-24,63	202,37
	40°	10°	80	60,67	DCRX0305.80.L40	-36,40	189,82
	45°	5°	80	59,98	DCRX0305.80.L45	-48,25	180,74
50°	0°	80	59,75	DCRX0305.80.L50	-60,06	170,17	
CRX03.100	-15°	65°	100	177,64	DCRX0305.80.H15	70,92	173,03
	-10°	60°	100	150,14	DCRX0305.80.H10	64,32	180,35
	-5°	55°	100	130,88	DCRX0305.80.H05	56,88	178,85
	0°	50°	100	116,79	DCRX0305.80.000	48,68	181,47
	5°	45°	100	106,17	DCRX0305.80.L05	39,75	179,89
	10°	40°	100	98	DCRX0305.80.L10	30,19	191,02
	15°	35°	100	91,65	DCRX0305.80.L15	20,05	197,52
	20°	30°	100	86,69	DCRX0305.80.L20	9,42	202,69
	25°	25°	100	82,83	DCRX0305.80.L25	-1,63	200,81
	30°	20°	100	79,89	DCRX0305.80.L30	-13,01	197,05
	35°	15°	100	77,72	DCRX0305.80.L35	-24,63	186,50
	40°	10°	100	76,23	DCRX0305.80.L40	-36,40	174,26
	45°	5°	100	75,36	DCRX0305.80.L45	-48,25	165,36
50°	0°	100	75,07	DCRX0305.80.L50	-60,06	154,85	



**ROLLER CAM UNIT - ROLLENSCHIEBER - CAMMA A RULLO**

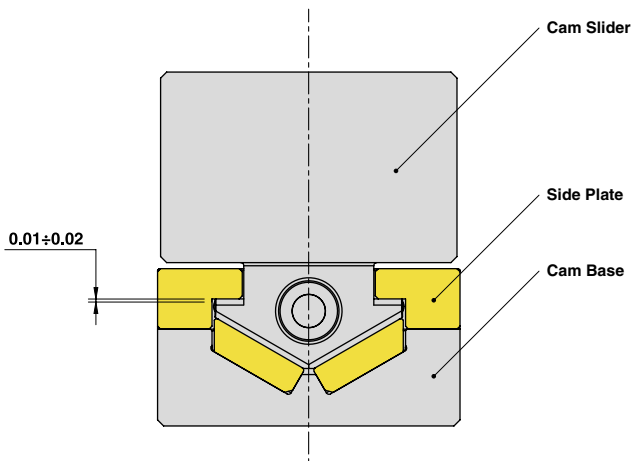
**UTILITY MODEL**  
 20 2014 90 2313403  
 20 2015 106 307  
 ES 1147383 U





ROLLER CAM UNIT - ROLLENSCHIEBER - CAMMA A RULLO

SLIDER STRUCTURE AND CLEARANCES



Cam Units CRX

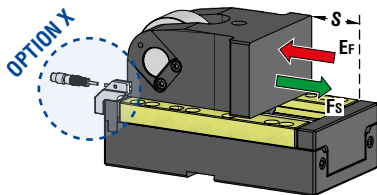
PART LIST

Particular number	Description	Material	Quantity
1	Cam Base	CK45	1
2	Wear Plate	CuZn25Al5 + Graphite - HB > 190	2
3	Spring Stopper Plate	CK45	1
4	Cam Slider	CK45	1
5	Side Plate L	CuZn25Al5 + Graphite - HB > 190	1
6	Pin	16NiCrMo4	1
7	Roller	100Cr6	1
8	Stopper Plate	CK45	2
9	Side Plate R	CuZn25Al5 + Graphite - HB > 190	1
10	Key - <b>OPTION K</b>	CK45	2
11	Positive Return + Roller KRV19PPA - <b>OPTION P</b>	CK45	2
12	Self-Lubricating Bush	CuZn25Al5 + Graphite - HB > 190	1
13	Elastomer Cap	Elastomer 92SH	4
14	Washer PCMW 264401.5M	-	2
15	Gas Spring	-	1
16	Back Position Check - <b>OPTION X</b>	-	1
17	Cam Base Fixing Screws M8x30 DIN 912	-	4



ROLLER CAM UNIT - ROLLENSCHIEBER - CAMMA A RULLO

Without Positive Return - OPTION K



OMCR CODE	Stroke (mm)	Max Work Force (kN)	Extraction Force (kN)	
			Ef	Gas Spring
CRX05.050	48	142	6,36	
CRX05.080	78	142	6,43	
CRX05.100	98	142	6,46	

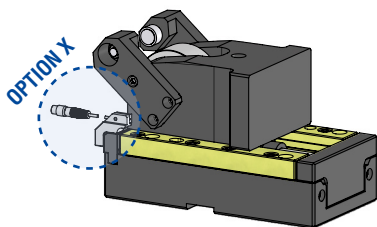


WEB

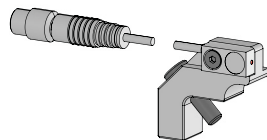
WEB

P.682

With Positive Return - OPTION P

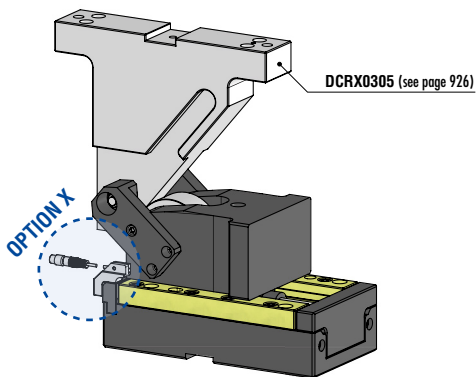


Back Position Check - OPTION X



Montable on right or left side  
auf rechte bzw. linke Seite montierbar  
Montabile sul lato destro e sinistro

With Driver - OPTION DRIVER



OPTION DRIVER Work angle (β)

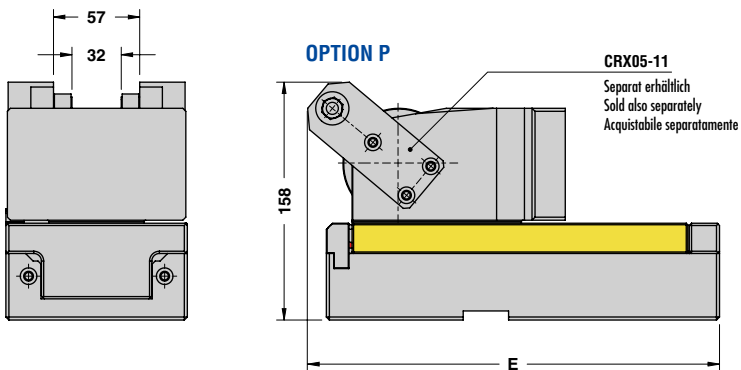
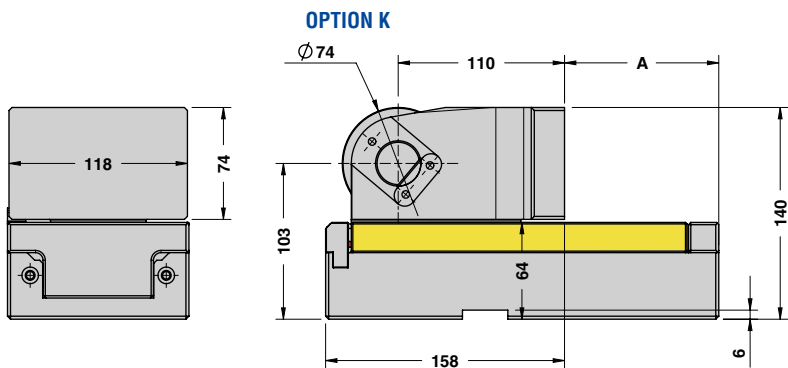
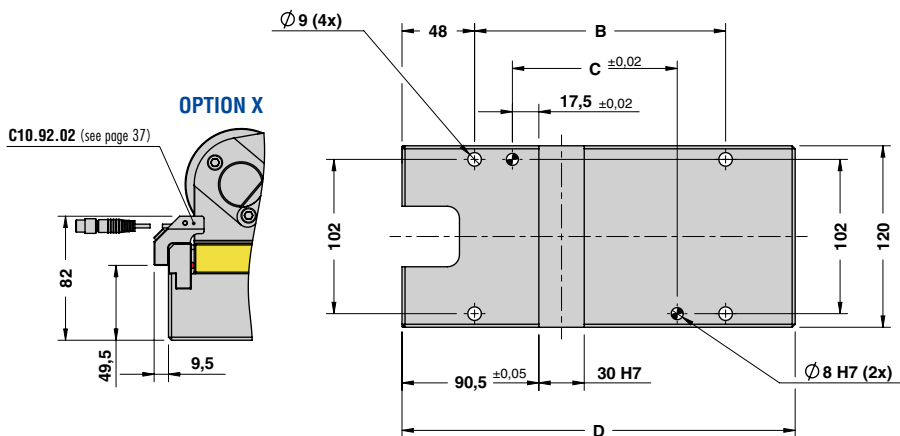
H15	-15°
H10	-10°
H05	-5°
000	0
L05	5°
L10	10°
L15	15°
L20	20°
L25	25°
L30	30°
L35	35°
L40	40°
L45	45°
L50	50°

STOCK	ORDER EXAMPLE	Art.	OPTION K-P	OPTION DRIVER	OPTION X
		CRX05.080	P	000	X

OMCR CODE	Stroke (mm)	Overall Dimensions (mm)				
		S	A	B	C	D
CRX05.050	48	42	116	59	200	213
CRX05.080	78	72	146	89	230	243
CRX05.100	98	102	166	109	260	273



ROLLER CAM UNIT - ROLLENSCHIEBER - CAMMA A RULLO



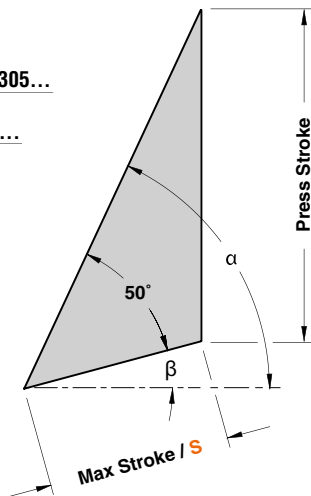
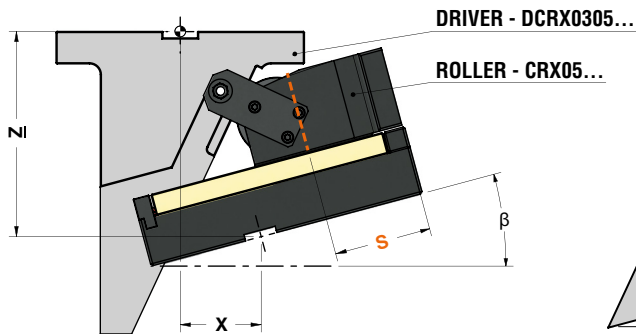
Cam Units CRX



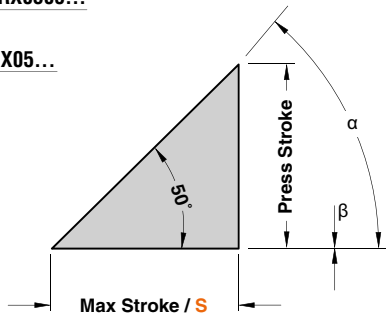
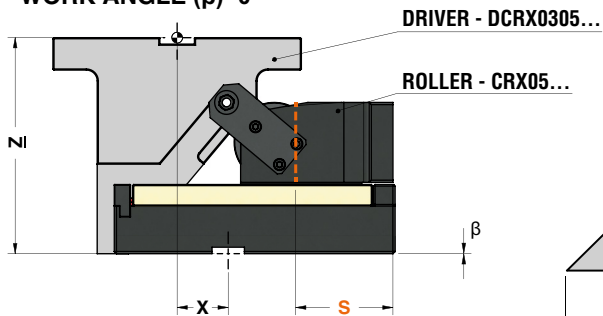


ROLLER CAM UNIT - ROLLENSCHIEBER - CAMMA A RULLO

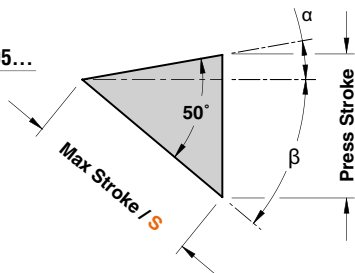
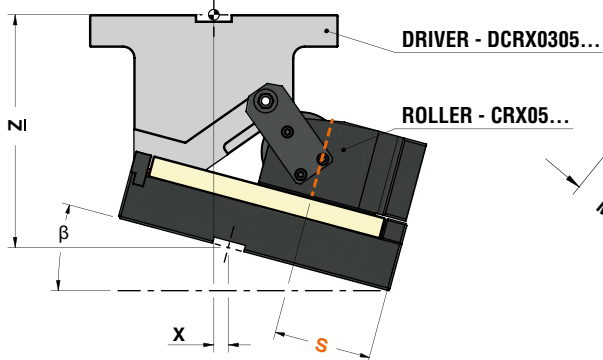
WORK ANGLE ( $\beta$ ) FROM  $-5^\circ$  TO  $-15^\circ$



WORK ANGLE ( $\beta$ )= $0^\circ$



WORK ANGLE ( $\beta$ ) FROM  $5^\circ$  TO  $50^\circ$





## ROLLER CAM UNIT - ROLLENSCHIEBER - CAMMA A RULLO

\*For more info see page 906 / Weitere Informationen finden Sie auf der Seite 906 / Per maggiori informazioni consultare la pagina 906

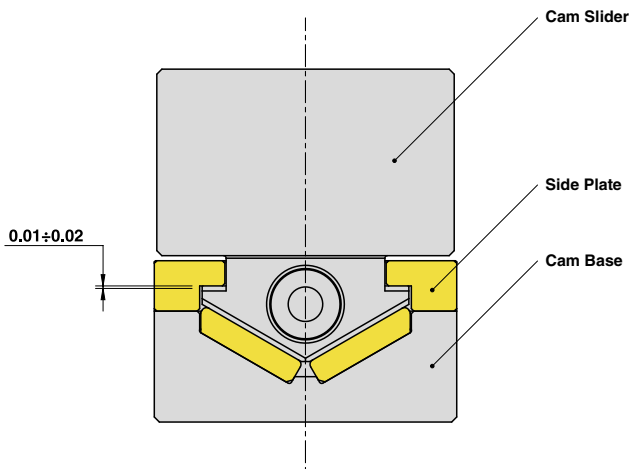
ROLLER CAM CODE	Work Angle $\beta$	$\alpha$	Max Stroke S (mm)	Press Stroke (mm)	*CAM DRIVER CODE	X (mm)	Z (mm)
CRX05.050	-15°	65°	50	87,01	DCRX0305.50.H15	99,96	189,49
	-10°	60°	50	73,54	DCRX0305.50.H10	91,56	192,74
	-5°	55°	50	64,11	DCRX0305.50.H05	82,30	201,52
	0°	50°	50	57,2	DCRX0305.50.000	72,27	206,92
	5°	45°	50	52	DCRX0305.50.L05	61,54	209,71
	10°	40°	50	48	DCRX0305.50.L10	50,18	215,34
	15°	35°	50	44,89	DCRX0305.50.L15	38,30	219,05
	20°	30°	50	42,46	DCRX0305.50.L20	25,96	221,04
	25°	25°	50	40,57	DCRX0305.50.L25	13,28	216,39
	30°	20°	50	39,13	DCRX0305.50.L30	0,35	210,42
	35°	15°	50	38,07	DCRX0305.50.L35	-12,74	207,44
	40°	10°	50	37,34	DCRX0305.50.L40	-25,89	203,23
	45°	5°	50	36,91	DCRX0305.50.L45	-38,99	197,57
50°	0°	50	36,77	DCRX0305.50.L50	-51,94	190,48	
CRX05.080	-15°	65°	80	141,38	DCRX0305.80.H15	74,96	229,80
	-10°	60°	80	119,5	DCRX0305.80.H10	66,56	231,78
	-5°	55°	80	104,17	DCRX0305.80.H05	57,30	226,46
	0°	50°	80	92,96	DCRX0305.80.000	47,27	226,17
	5°	45°	80	84,5	DCRX0305.80.L05	36,54	222,21
	10°	40°	80	78	DCRX0305.80.L10	25,18	230,34
	15°	35°	80	72,94	DCRX0305.80.L15	13,30	236,00
	20°	30°	80	69	DCRX0305.80.L20	0,96	239,50
	25°	25°	80	65,93	DCRX0305.80.L25	-11,72	236,03
	30°	20°	80	63,59	DCRX0305.80.L30	-24,65	230,71
	35°	15°	80	61,86	DCRX0305.80.L35	-37,74	218,64
	40°	10°	80	60,67	DCRX0305.80.L40	-50,89	204,89
	45°	5°	80	59,98	DCRX0305.80.L45	-63,99	194,50
50°	0°	80	59,75	DCRX0305.80.L50	-76,94	182,50	
CRX05.100	-15°	65°	100	177,64	DCRX0305.80.H15	74,96	193,54
	-10°	60°	100	150,14	DCRX0305.80.H10	66,56	201,14
	-5°	55°	100	130,88	DCRX0305.80.H05	57,30	199,75
	0°	50°	100	116,79	DCRX0305.80.000	47,27	202,33
	5°	45°	100	106,17	DCRX0305.80.L05	36,54	200,54
	10°	40°	100	98	DCRX0305.80.L10	25,18	210,34
	15°	35°	100	91,65	DCRX0305.80.L15	13,30	217,30
	20°	30°	100	86,69	DCRX0305.80.L20	0,96	221,81
	25°	25°	100	82,83	DCRX0305.80.L25	-11,72	219,13
	30°	20°	100	79,89	DCRX0305.80.L30	-24,65	214,41
	35°	15°	100	77,72	DCRX0305.80.L35	-37,74	202,78
	40°	10°	100	76,23	DCRX0305.80.L40	-50,89	189,33
	45°	5°	100	75,36	DCRX0305.80.L45	-63,99	179,12
50°	0°	100	75,07	DCRX0305.80.L50	-76,94	167,18	





## ROLLER CAM UNIT - ROLLENSCHIEBER - CAMMA A RULLO

## SLIDER STRUCTURE AND CLEARANCES



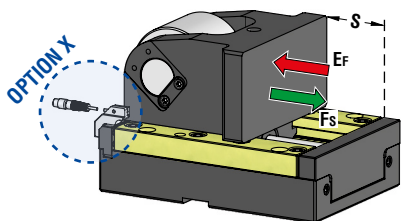
## PART LIST

Particular number	Description	Material	Quantity
1	Cam Base	CK45	1
2	Wear Plate	CuZn25Al5 + Graphite - HB > 190	2
3	Spring Stopper Plate	CK45	1
4	Cam Slider	CK45	1
5	Side Plate L	CuZn25Al5 + Graphite - HB > 190	1
6	Pin	16NiCrMo4	1
7	Roller	100Cr6	1
8	Stopper Plate	CK45	2
9	Side Plate R	CuZn25Al5 + Graphite - HB > 190	1
10	Key - <b>OPTION K</b>	CK45	2
11	Positive Return + Roller KRV19PPA - <b>OPTION P</b>	CK45	2
12	Self-Lubricating Bush	CuZn25Al5 + Graphite - HB > 190	1
13	Elastomer Cap	Elastomer 92SH	4
14	Washer PCMW 325401.5M	-	2
15	Gas Spring	-	1
16	Back Position Check - <b>OPTION X</b>	-	1
17	Cam Base Fixing Screws M8x30 DIN 912	-	4

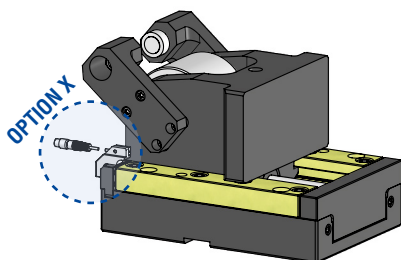


**ROLLER CAM UNIT - ROLLENSCHIEBER - CAMMA A RULLO**

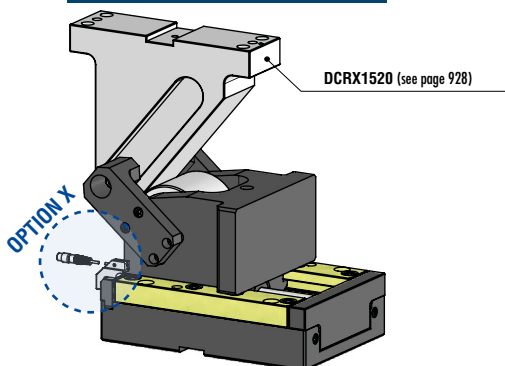
**Without Positive Return - OPTION K**



**With Positive Return - OPTION P**



**With Driver - OPTION DRIVER**



OMCR CODE	Stroke (mm)	Max Work Force (kN)	Extraction Force (kN)	
			Ef	Gas Spring
CRX15.050	48	166	6,45	
CRX15.080	78	166	6,57	
CRX15.100	98	166	6,61	

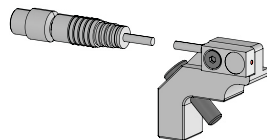


WEB

WEB

P.682

**Back Position Check - OPTION X**



Montable on right or left side  
auf rechte bzw. linke Seite montierbar  
Montabile sul lato destro e sinistro

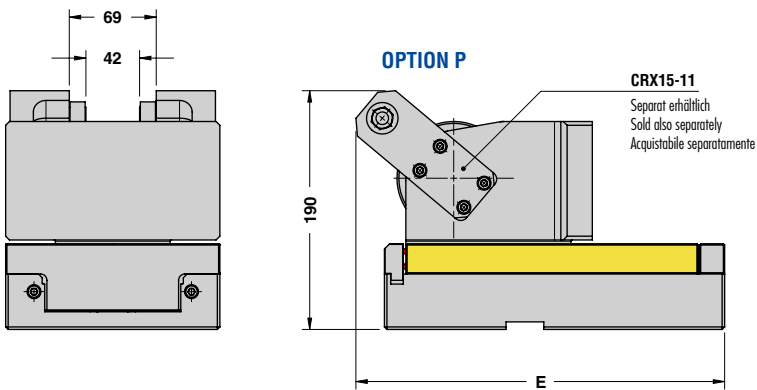
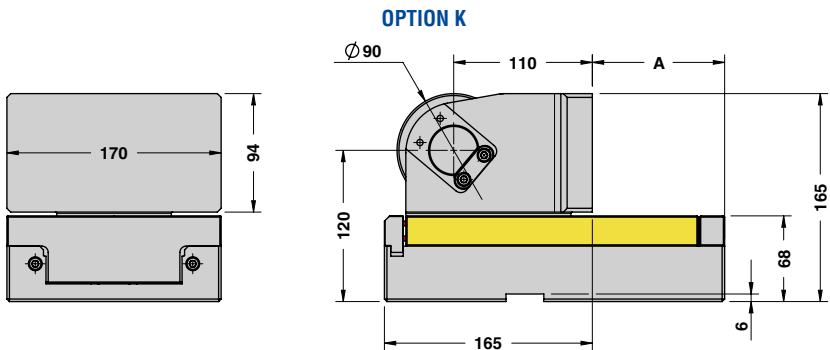
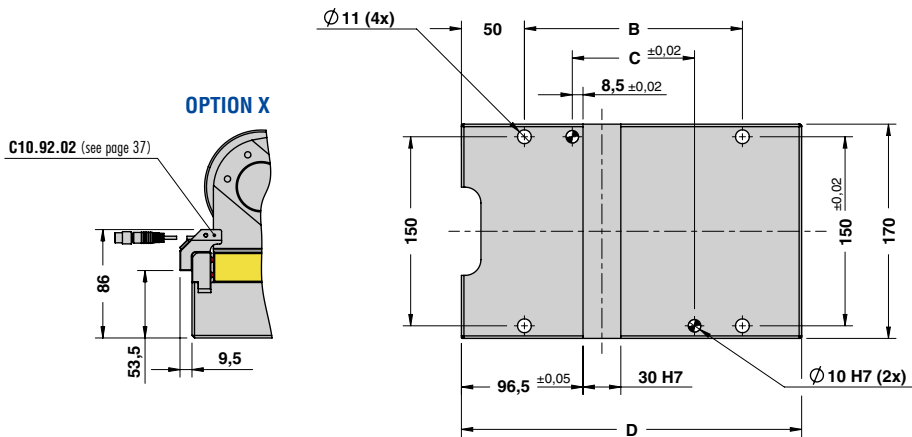
OPTION DRIVER	Work angle (β)
H15	-15°
H10	-10°
H05	-5°
000	0
L05	5°
L10	10°
L15	15°
L20	20°
L25	25°
L30	30°
L35	35°
L40	40°
L45	45°
L50	50°

STOCK		Art.	Stroke = 80	OPTION K-P	OPTION DRIVER	OPTION X
		CRX15	080	P	000	X

OMCR CODE	Stroke (mm)	Overall Dimensions (mm)				
		S	A	B	C	D
CRX15.050	48	55	123	47	220	243
CRX15.080	78	85	153	77	250	273
CRX15.100	98	105	173	97	270	293



ROLLER CAM UNIT - ROLLENSCHIEBER - CAMMA A RULLO

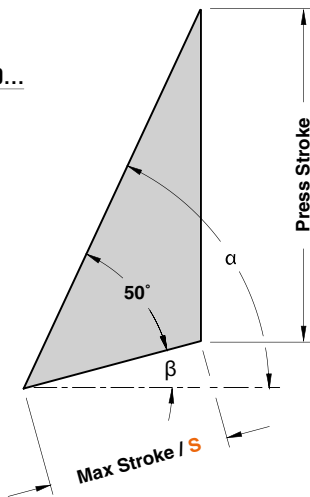
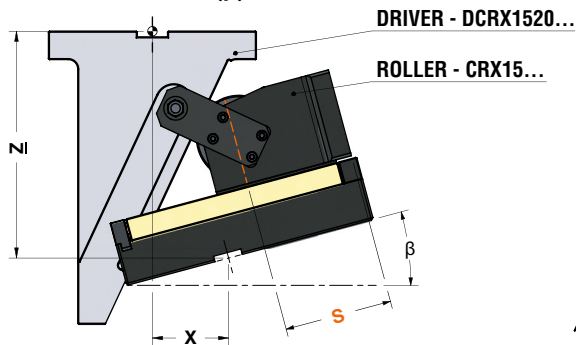


Cam Units CRX

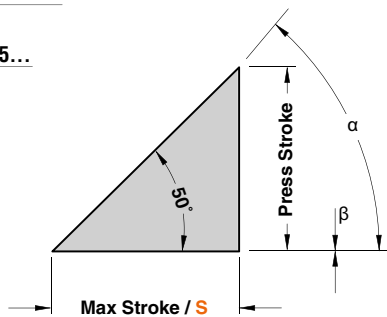
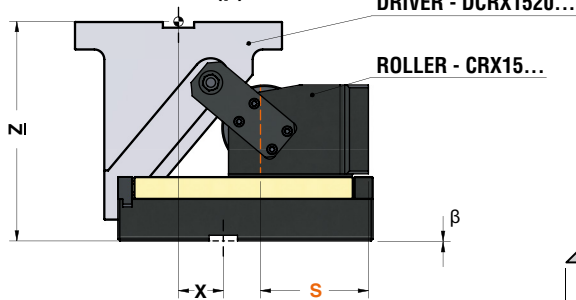


ROLLER CAM UNIT - ROLLENSCHIEBER - CAMMA A RULLO

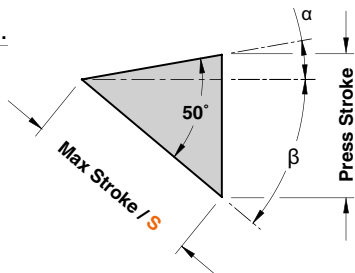
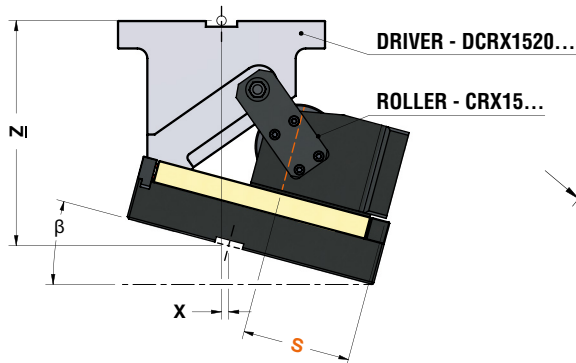
WORK ANGLE ( $\beta$ ) FROM  $-5^\circ$  TO  $-15^\circ$



WORK ANGLE ( $\beta$ ) =  $0^\circ$



WORK ANGLE ( $\beta$ ) FROM  $5^\circ$  TO  $50^\circ$





## ROLLER CAM UNIT - ROLLENSCHIEBER - CAMMA A RULLO

\*For more info see page 928 / Weitere Informationen finden Sie auf der Seite 928 / Per maggiori informazioni consultare la pagina 928

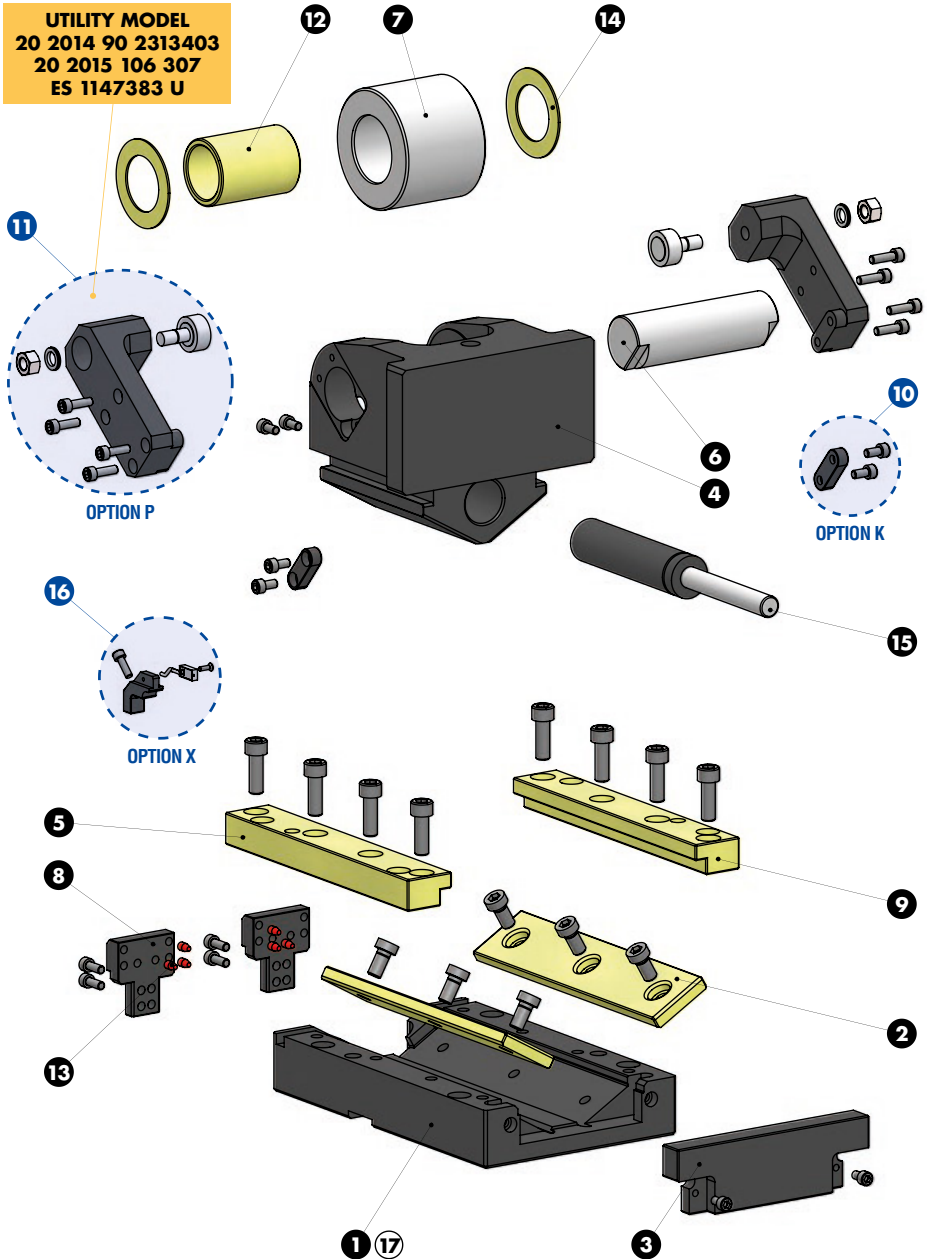
ROLLER CAM CODE	Work Angle $\beta$	$\alpha$	Max Stroke S (mm)	Press Stroke (mm)	*CAM DRIVER CODE	X (mm)	Z (mm)
CRX15.050	-15°	65°	50	87,01	DCRX1520.50.H15	105,64	224,24
	-10°	60°	50	73,54	DCRX1520.50.H10	95,45	223,67
	-5°	55°	50	64,11	DCRX1520.50.H05	84,34	223,13
	0°	50°	50	57,2	DCRX1520.50.000	72,39	229,07
	5°	45°	50	52	DCRX1520.50.L05	59,71	232,76
	10°	40°	50	48	DCRX1520.50.L10	46,38	238,04
	15°	35°	50	44,89	DCRX1520.50.L15	32,51	241,78
	20°	30°	50	42,46	DCRX1520.50.L20	18,21	243,60
	25°	25°	50	40,57	DCRX1520.50.L25	3,57	238,62
	30°	20°	50	39,13	DCRX1520.50.L30	-11,28	231,91
	35°	15°	50	38,07	DCRX1520.50.L35	-26,24	228,52
	40°	10°	50	37,34	DCRX1520.50.L40	-41,19	223,49
	45°	5°	50	36,91	DCRX1520.50.L45	-56,01	216,85
50°	0°	50	36,77	DCRX1520.50.L50	-95,60	208,65	
CRX15.080	-15°	65°	80	141,38	DCRX1520.80.H15	80,64	279,87
	-10°	60°	80	119,5	DCRX1520.80.H10	70,45	262,70
	-5°	55°	80	104,17	DCRX1520.80.H05	59,34	258,07
	0°	50°	80	92,96	DCRX1520.80.000	47,39	258,32
	5°	45°	80	84,5	DCRX1520.80.L05	34,71	249,72
	10°	40°	80	78	DCRX1520.80.L10	21,38	258,04
	15°	35°	80	72,94	DCRX1520.80.L15	7,51	258,72
	20°	30°	80	69	DCRX1520.80.L20	-6,78	262,06
	25°	25°	80	65,93	DCRX1520.80.L25	-21,42	253,26
	30°	20°	80	63,59	DCRX1520.80.L30	-36,28	252,45
	35°	15°	80	61,86	DCRX1520.80.L35	-51,24	234,72
	40°	10°	80	60,67	DCRX1520.80.L40	-66,19	225,15
	45°	5°	80	59,98	DCRX1520.80.L45	-81,01	213,78
50°	0°	80	59,75	DCRX1520.80.L50	-95,60	200,66	
CRX15.100	-15°	65°	100	177,64	DCRX1520.80.H15	80,64	243,61
	-10°	60°	100	150,14	DCRX1520.80.H10	70,45	232,06
	-5°	55°	100	130,88	DCRX1520.80.H05	59,34	231,36
	0°	50°	100	116,79	DCRX1520.80.000	47,39	234,48
	5°	45°	100	106,17	DCRX1520.80.L05	34,71	228,06
	10°	40°	100	98	DCRX1520.80.L10	21,38	238,04
	15°	35°	100	91,65	DCRX1520.80.L15	7,51	240,02
	20°	30°	100	86,69	DCRX1520.80.L20	-6,78	244,37
	25°	25°	100	82,83	DCRX1520.80.L25	-21,42	236,36
	30°	20°	100	79,89	DCRX1520.80.L30	-36,28	236,15
	35°	15°	100	77,72	DCRX1520.50.L35	-51,24	218,86
	40°	10°	100	76,23	DCRX1520.80.L40	-66,19	209,59
	45°	5°	100	75,36	DCRX1520.80.L45	-81,01	198,40
50°	0°	100	75,07	DCRX1520.80.L50	-95,60	185,34	





**ROLLER CAM UNIT - ROLLENSCHIEBER - CAMMA A RULLO**

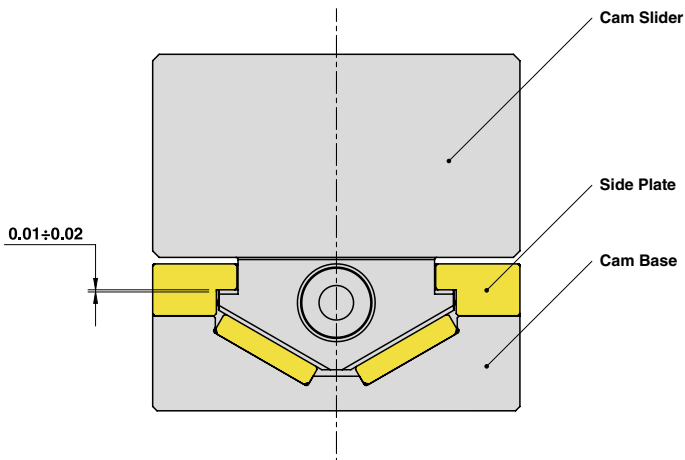
**UTILITY MODEL**  
 20 2014 90 2313403  
 20 2015 106 307  
 ES 1147383 U





ROLLER CAM UNIT - ROLLENSCHIEBER - CAMMA A RULLO

SLIDER STRUCTURE AND CLEARANCES



Cam Units CRX

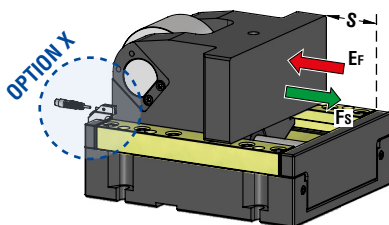
PART LIST

Particular number	Description	Material	Quantity
1	Cam Base	CK45	1
2	Wear Plate	CuZn25Al5 + Graphite - HB > 190	2
3	Gas Spring Stopper Plate	CK45	1
4	Cam Slider	CK45	1
5	Side Plate L	CuZn25Al5 + Graphite - HB > 190	1
6	Pin	16NiCrMo4	1
7	Roller	100Cr6	1
8	Stopper Plate	CK45	2
9	Side Plate R	CuZn25Al5 + Graphite - HB > 190	1
10	Key - <b>OPTION K</b>	CK45	2
11	Positive Return + Roller KRV26PPA - <b>OPTION P</b>	CK45	2
12	Self-Lubricating Bush	CuZn25Al5 + Graphite - HB > 190	1
13	Elastomer Cap	Elastomer 92SH	6
14	Washer PCMW 426601.5M	-	2
15	Gas Spring	-	1
16	Back Position Check - <b>OPTION X</b>	-	1
17	Cam Base Fixing Screws M10x35 DIN 912	-	4

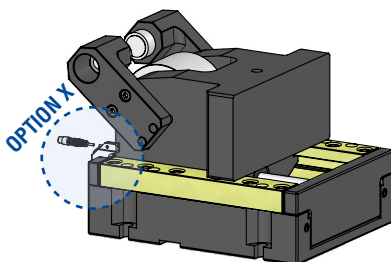


ROLLER CAM UNIT - ROLLENSCHIEBER - CAMMA A RULLO

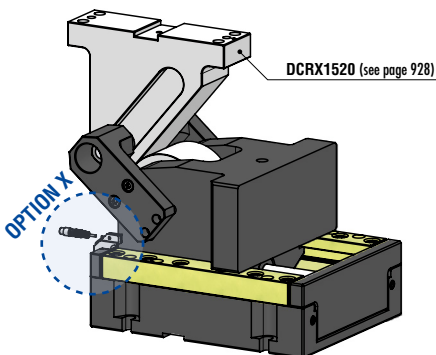
Without Positive Return - OPTION K



With Positive Return - OPTION P



With Driver - OPTION DRIVER



OMCR CODE	Stroke (mm)	Max Work Force (kN)	Extraction Force (kN)	
			Ef	Gas Spring
	S	Fs		
CRX20.050	48	258	9,29	
CRX20.080	78	258	9,36	
CRX20.100	98	258	9,38	

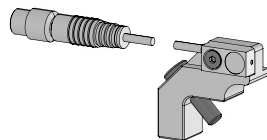


WEB

WEB

P.682

Back Position Check - OPTION X



Montable on right or left side  
auf rechte bzw. linke Seite montierbar  
Montabile sul lato destro e sinistro

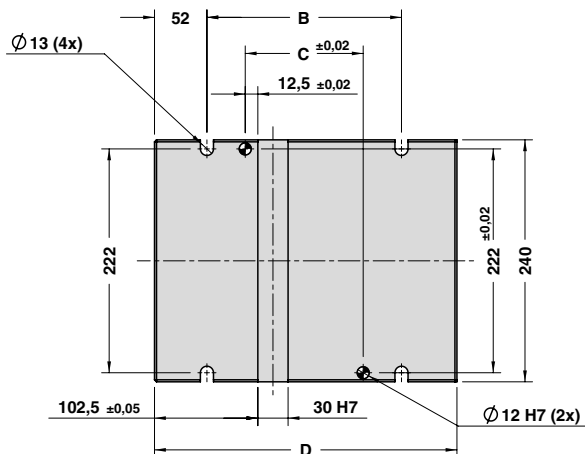
OPTION DRIVER	Work angle ( $\beta$ )
H15	-15°
H10	-10°
H05	-5°
000	0
L05	5°
L10	10°
L15	15°
L20	20°
L25	25°
L30	30°
L35	35°
L40	40°
L45	45°
L50	50°

STOCK	ORDER EXAMPLE	Art.	Stroke = 80	OPTION K-P	OPTION DRIVER	OPTION X
		CRX20	080	P	000	X

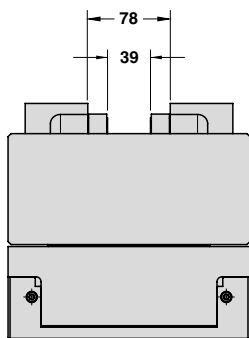
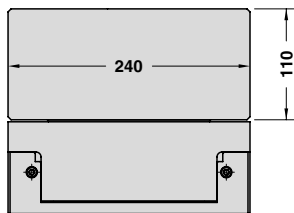
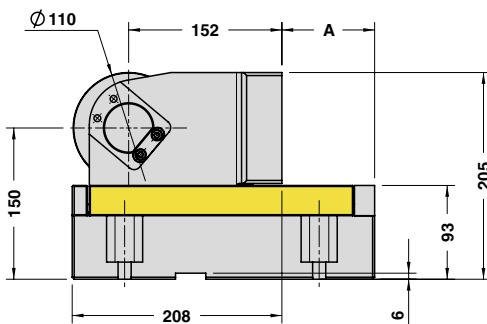
OMCR CODE	Stroke (mm)	Overall Dimensions (mm)				
		S	A	B	C	D
CRX20.050	48	42	143	67	250	290
CRX20.080	78	72	173	97	280	320
CRX20.100	98	92	193	117	300	340



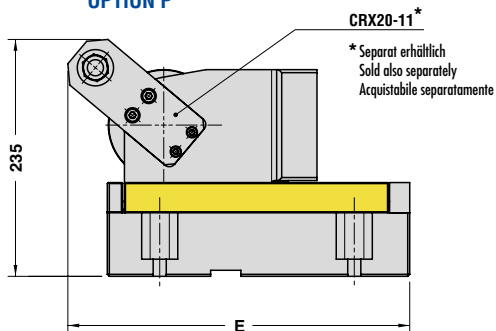
ROLLER CAM UNIT - ROLLENSCHIEBER - CAMMA A RULLO



OPTION K

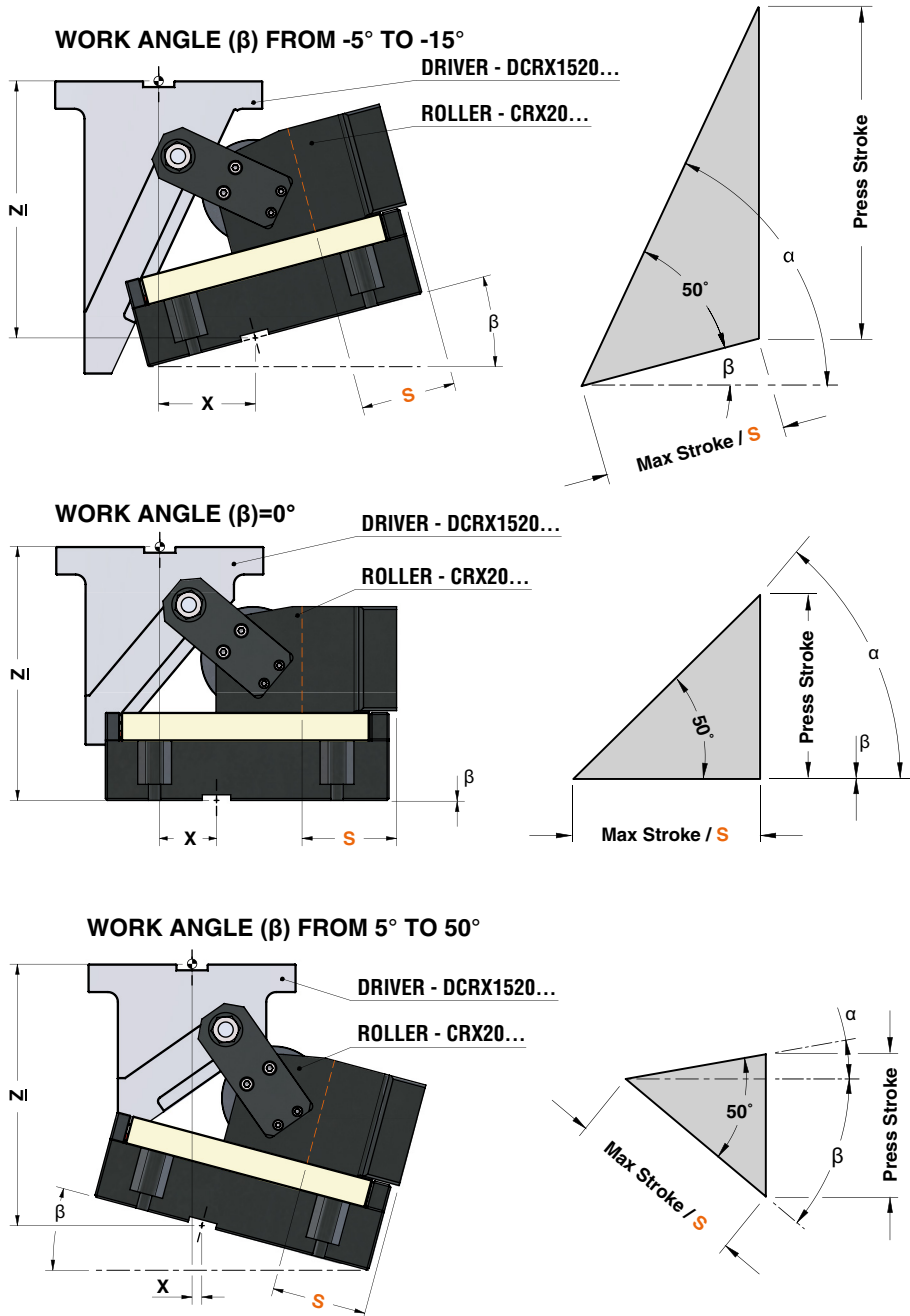


OPTION P





ROLLER CAM UNIT - ROLLENSCHIEBER - CAMMA A RULLO



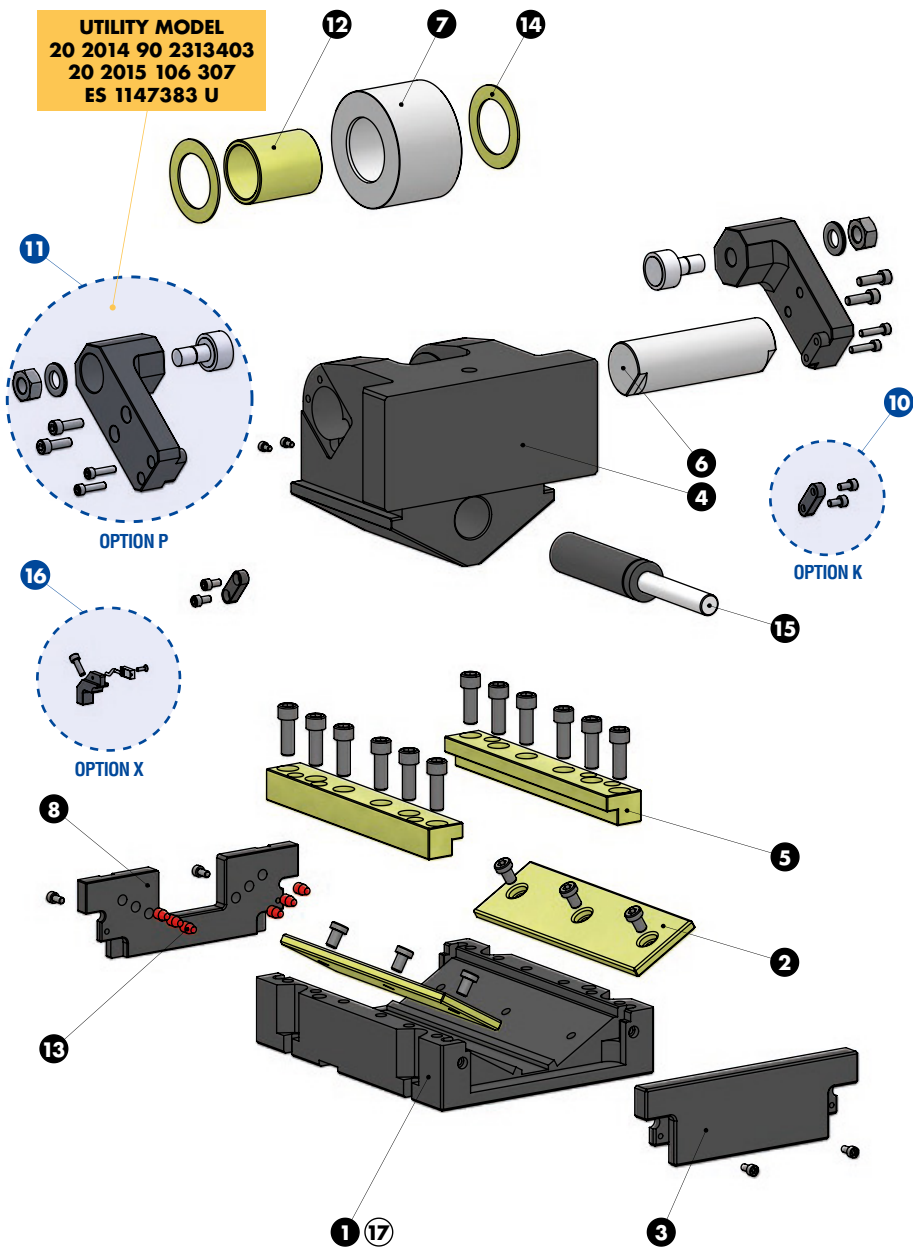

**ROLLER CAM UNIT - ROLLENSCHIEBER - CAMMA A RULLO**

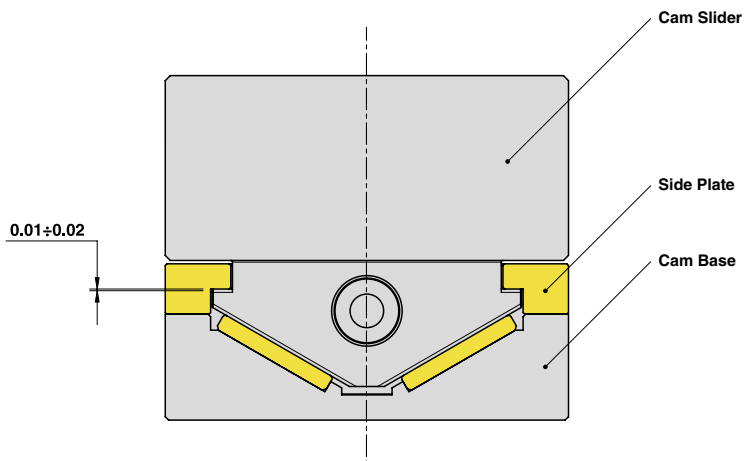
ROLLER CAM CODE	Work Angle $\beta$	$\alpha$	Max Stroke S (mm)	Press Stroke (mm)	*CAM DRIVER CODE	X (mm)	Z (mm)
CRX20.050	-15°	65°	50	87,01	DCRX1520.50.H15	127,30	256,15
	-10°	60°	50	73,54	DCRX1520.50.H10	114,24	257,35
	-5°	55°	50	64,11	DCRX1520.50.H05	100,12	258,33
	0°	50°	50	57,2	DCRX1520.50.000	85,06	265,49
	5°	45°	50	52	DCRX1520.50.L05	69,15	269,61
	10°	40°	50	48	DCRX1520.50.L10	52,53	276,11
	15°	35°	50	44,89	DCRX1520.50.L15	35,31	280,24
	20°	30°	50	42,46	DCRX1520.50.L20	17,64	282,17
	25°	25°	50	40,57	DCRX1520.50.L25	-0,34	276,67
	30°	20°	50	39,13	DCRX1520.50.L30	-18,53	269,79
	35°	15°	50	38,07	DCRX1520.50.L35	-36,76	265,62
	40°	10°	50	37,34	DCRX1520.50.L40	-54,90	259,53
45°	5°	50	36,91	DCRX1520.50.L45	-72,82	251,56	
50°	0°	50	36,77	DCRX1520.50.L50	-90,37	241,76	
CRX20.080	-15°	65°	80	141,38	DCRX1520.80.H15	102,30	311,77
	-10°	60°	80	119,5	DCRX1520.80.H10	89,24	296,39
	-5°	55°	80	104,17	DCRX1520.80.H05	75,13	293,25
	0°	50°	80	92,96	DCRX1520.80.000	60,06	294,74
	5°	45°	80	84,5	DCRX1520.80.L05	44,15	287,11
	10°	40°	80	78	DCRX1520.80.L10	27,53	296,11
	15°	35°	80	72,94	DCRX1520.80.L15	10,32	297,18
	20°	30°	80	69	DCRX1520.80.L20	-7,35	300,62
	25°	25°	80	65,93	DCRX1520.80.L25	-25,35	291,63
	30°	20°	80	63,59	DCRX1520.80.L30	-43,53	290,33
	35°	15°	80	61,86	DCRX1520.80.L35	-61,76	271,83
	40°	10°	80	60,67	DCRX1520.80.L40	-79,91	261,19
45°	5°	80	59,98	DCRX1520.80.L45	-97,82	248,49	
50°	0°	80	59,75	DCRX1520.80.L50	-115,38	233,78	
CRX20.100	-15°	65°	100	177,64	DCRX1520.80.H15	102,30	275,52
	-10°	60°	100	150,14	DCRX1520.80.H10	89,24	265,74
	-5°	55°	100	130,88	DCRX1520.80.H05	75,12	266,55
	0°	50°	100	116,79	DCRX1520.80.000	60,06	270,90
	5°	45°	100	106,17	DCRX1520.80.L05	44,15	265,45
	10°	40°	100	98	DCRX1520.80.L10	27,53	276,11
	15°	35°	100	91,65	DCRX1520.80.L15	10,31	278,48
	20°	30°	100	86,69	DCRX1520.80.L20	-7,35	282,93
	25°	25°	100	82,83	DCRX1520.80.L25	-25,34	274,72
	30°	20°	100	79,89	DCRX1520.80.L30	-43,53	273,84
	35°	15°	100	77,72	DCRX1520.80.L35	-61,76	255,96
	40°	10°	100	76,23	DCRX1520.80.L40	-79,90	245,69
45°	5°	100	75,36	DCRX1520.80.L45	-97,82	233,11	
50°	0°	100	75,07	DCRX1520.80.L50	-115,37	218,46	



ROLLER CAM UNIT - ROLLENSCHIEBER - CAMMA A RULLO

**UTILITY MODEL**  
 20 2014 90 2313403  
 20 2015 106 307  
 ES 1147383 U



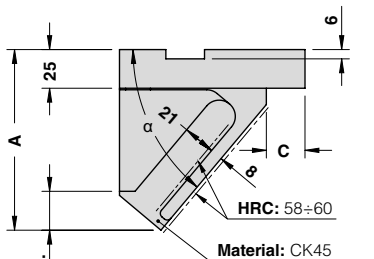
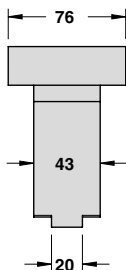
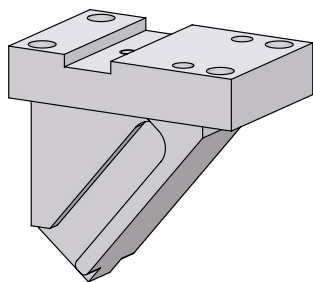

**ROLLER CAM UNIT - ROLLENSCHIEBER - CAMMA A RULLO**
**SLIDER STRUCTURE AND CLEARANCES**

**PART LIST**

Particular number	Description	Material	Quantity
1	Cam Base	CK45	1
2	Wear Plate	CuZn25Al5 + Graphite - HB > 190	2
3	Gas Spring Stopper Plate	CK45	1
4	Cam Slider	CK45	1
5	Side Plate	CuZn25Al5 + Graphite - HB > 190	2
6	Pin	16NiCrMo4	1
7	Roller	100Cr6	1
8	Stopper Plate	CK45	1
10	Key - <b>OPTION K</b>	CK45	2
11	Positive Return + Roller KRV35PPA - <b>OPTION P</b>	CK45	2
12	Self-Lubricating Bush	CuZn25Al5 + Graphite - HB > 190	1
13	Elastomer Cap	Elastomer 92SH	6
14	Washer PCMW 52780.2M	-	2
15	Gas Spring	-	1
16	Back Position Check - <b>OPTION X</b>	-	1
17	Cam Base Fixing Screws M12x35 DIN 912	-	4

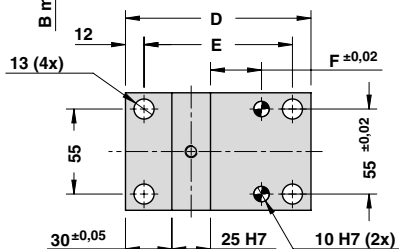




## ROLLER CAM DRIVER - TREIBER FÜR ROLLENSCHIEBER - CUNEO PER CAMME A RULLO



For driver positioning see pages 896-897  
 Positionierung des Treibers siehe Seiten 896-897  
 Per posizionamento cuneo vedi pagine 896-897

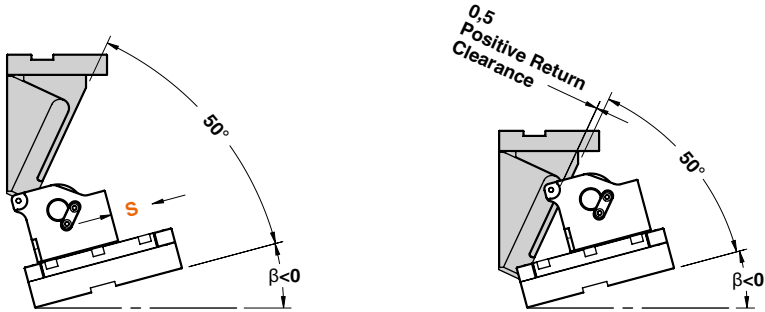


STOCK		Art.	Work angle = 0°
		DCRX0100.30	000

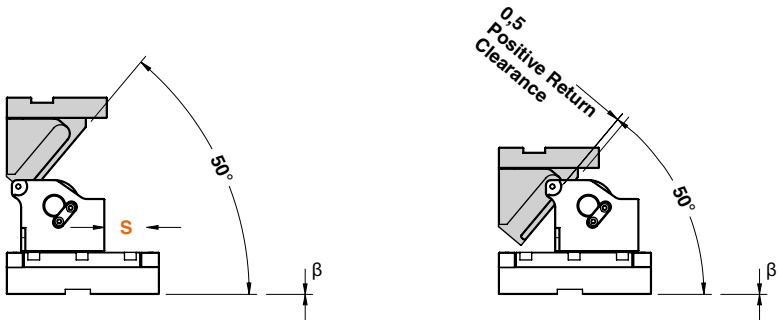
OMCR CODE	ROLLER CAM MODEL	Stroke (mm)	Work Angle	Overall Dimensions (mm)						
		S	β	α	A	B min.	C	D	E	F
DCRX0100.30.H15	CRX01.030	30	-15°	65°	131	18	30	100	76	13
DCRX0100.30.H10		30	-10°	60°	113,5	20,5	30	100	76	13
DCRX0100.30.H05		30	-5°	55°	97	22,5	30	100	76	13
DCRX0100.30.000		30	0°	50°	92,5	24,5	30	100	76	13
DCRX0100.30.L05		30	5°	45°	82	26,5	30	100	76	13
DCRX0100.30.L10		30	10°	40°	78,5	28	30	100	76	13
DCRX0100.30.L15		30	15°	35°	75,5	29,5	30	100	76	13
DCRX0100.30.L20		30	20°	30°	74	31	30	100	76	13
DCRX0100.30.L25		30	25°	25°	70,5	34,5	30	100	76	13
DCRX0100.30.L30		30	30°	20°	70	33	30	100	76	13
DCRX0100.30.L35		30	35°	15°	69	32	30	100	76	13
DCRX0100.30.L40		30	40°	10°	65	32	30	100	76	13
DCRX0100.30.L45		30	45°	5°	62	30,5	30	100	76	13
DCRX0100.30.L50		30	50°	0°	59,5	29	30	100	76	13
DCRX0100.50.H15		CRX01.050	48	-15°	65°	179	16	25	120	96
DCRX0100.50.H10	48		-10°	60°	153,5	20,5	25	120	96	33
DCRX0100.50.H05	48		-5°	55°	142	22,5	25	120	96	33
DCRX0100.50.000	48		0°	50°	116	24,5	25	120	96	33
DCRX0100.50.L05	48		5°	45°	111	26,5	25	120	96	33
DCRX0100.50.L10	48		10°	40°	101,5	31	25	120	96	33
DCRX0100.50.L15	48		15°	35°	99	33	25	120	96	33
DCRX0100.50.L20	48		20°	30°	93	33	25	120	96	33
DCRX0100.50.L25	48		25°	25°	87,5	30,5	25	120	96	33
DCRX0100.50.L30	48		30°	20°	83	29,5	25	120	96	33
DCRX0100.50.L35	48		35°	15°	84	30,5	25	120	96	33
DCRX0100.50.L40	48		40°	10°	75	31	25	120	96	33
DCRX0100.50.L45	48		45°	5°	72	31,5	25	120	96	33
DCRX0100.50.L50	48		50°	0°	69,5	29	25	120	96	33



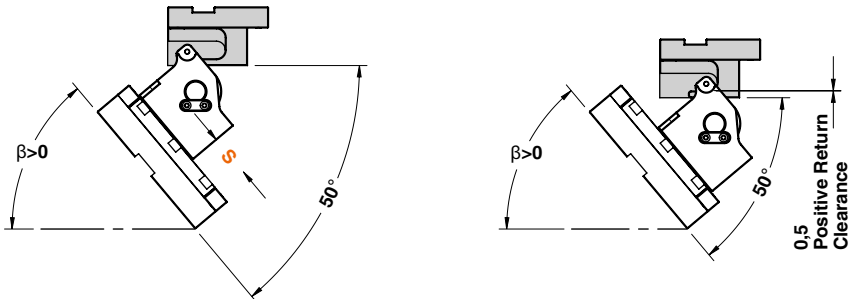
FUNCTIONING EXAMPLE FOR WORK ANGLE ( $\beta$ ) FROM  $-5^\circ$  TO  $-15^\circ$



FUNCTIONING EXAMPLE FOR WORK ANGLE ( $\beta$ )=0°

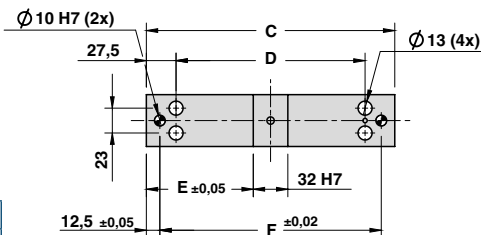
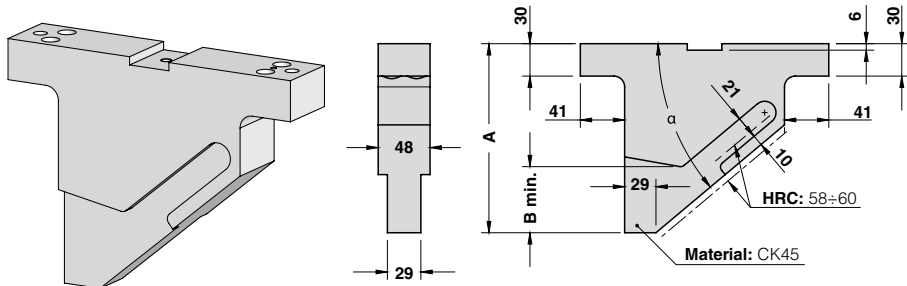


FUNCTIONING EXAMPLE FOR WORK ANGLE ( $\beta$ ) FROM  $5^\circ$  TO  $50^\circ$





ROLLER CAM DRIVER - TREIBER FÜR ROLLENSCHIEBER - CUNEO PER CAMME A RULLO



For driver positioning see pages 902-903 and 908-909  
 Positionierung des Treibers siehe Seiten 902-903 und 908-909  
 Per posizionamento cuneo vedi pagine 902-903 e 908-909

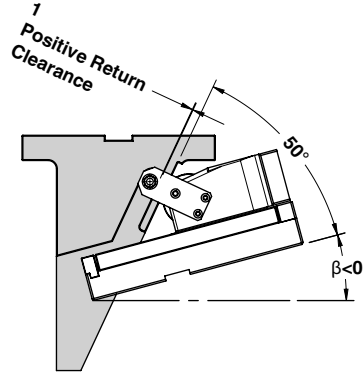
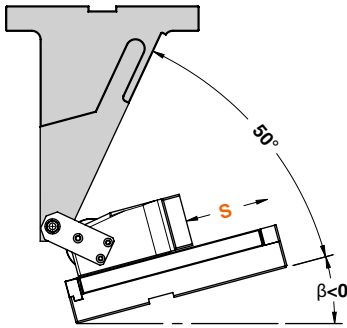
STOCK	ORDER EXAMPLE	Art.	Work angle = 0°
		DCRX0305.50	000

OMCR CODE	ROLLER CAM MODEL	Stroke (mm)	Work Angle	Overall Dimensions (mm)						
		S	β	α	A	B min.	C	D	E	F
DCRX0305.50.H15	CRX03.050 CRX05.050	48	-15°	65°	185	70	180	125	74	155
DCRX0305.50.H10		48	-10°	60°	165	70	180	125	74	155
DCRX0305.50.H05		48	-5°	55°	155	60	180	125	74	155
DCRX0305.50.000		48	0°	50°	145	50	180	125	74	155
DCRX0305.50.L05		48	5°	45°	135	40	180	125	74	155
DCRX0305.50.L10		48	10°	40°	130	35	180	125	74	155
DCRX0305.50.L15		48	15°	35°	125	30	180	125	74	155
DCRX0305.50.L20		48	20°	30°	120	25	180	125	74	155
DCRX0305.50.L25		48	25°	25°	110	40	180	125	74	155
DCRX0305.50.L30		48	30°	20°	100	30	180	125	74	155
DCRX0305.50.L35		48	35°	15°	95	25	180	125	74	155
DCRX0305.50.L40		48	40°	10°	90	20	180	125	74	155
DCRX0305.50.L45		48	45°	5°	85	25	180	125	74	155
DCRX0305.50.L50		48	50°	0°	80	30	180	125	74	155
DCRX0305.80.H15		CRX03.080 CRX03.100 CRX05.080 CRX05.100	78-98	-15°	65°	280	160	230	175	99
DCRX0305.80.H10	78-98		-10°	60°	250	130	230	175	99	205
DCRX0305.80.H05	78-98		-5°	55°	220	100	230	175	99	205
DCRX0305.80.000	78-98		0°	50°	200	80	230	175	99	205
DCRX0305.80.L05	78-98		5°	45°	180	60	230	175	99	205
DCRX0305.80.L10	78-98		10°	40°	175	55	230	175	99	205
DCRX0305.80.L15	78-98		15°	35°	170	50	230	175	99	205
DCRX0305.80.L20	78-98		20°	30°	165	45	230	175	99	205
DCRX0305.80.L25	78-98		25°	25°	155	65	230	175	99	205
DCRX0305.80.L30	78-98		30°	20°	145	55	230	175	99	205
DCRX0305.80.L35	78-98		35°	15°	130	50	230	175	99	205
DCRX0305.80.L40	78-98		40°	10°	115	55	230	175	99	205
DCRX0305.80.L45	78-98		45°	5°	105	45	230	175	99	205
DCRX0305.80.L50	78-98		50°	0°	95	55	230	175	99	205

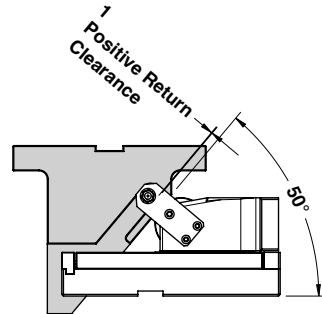
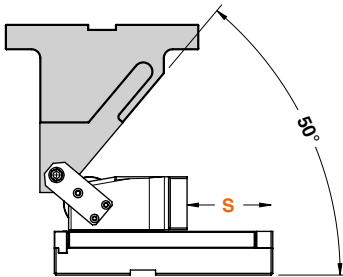


ROLLER CAM DRIVER - TREIBER FÜR ROLLENSCHIEBER - CUNEO PER CAMME A RULLO

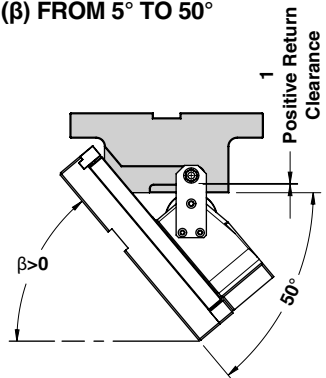
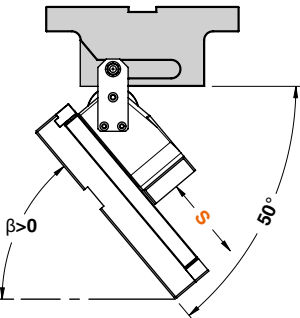
FUNCTIONING EXAMPLE FOR WORK ANGLE ( $\beta$ ) FROM  $-5^\circ$  TO  $-15^\circ$



FUNCTIONING EXAMPLE FOR WORK ANGLE ( $\beta$ )=0°

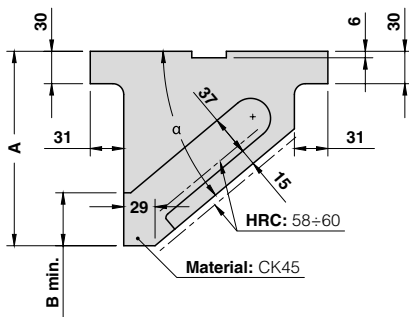
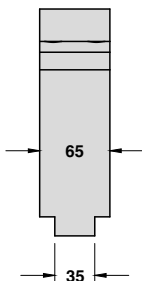
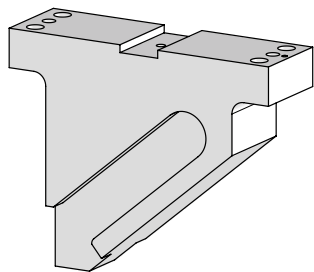


FUNCTIONING EXAMPLE FOR WORK ANGLE ( $\beta$ ) FROM  $5^\circ$  TO  $50^\circ$



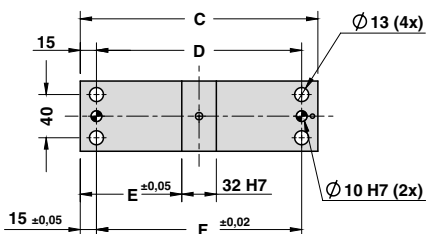


## ROLLER CAM DRIVER - TREIBER FÜR ROLLENSCHIEBER - CUNEO PER CAMME A RULLO



For driver positioning see pages 914-915 and 920-921  
 Positionierung des Treibers siehe Seiten 914-915 und 920-921  
 Per posizionamento cuneo vedi pagine 914-915 e 920-921

STOCK	ORDER EXAMPLE	Art.	Work angle = 0°
		DCRX1520.50	000

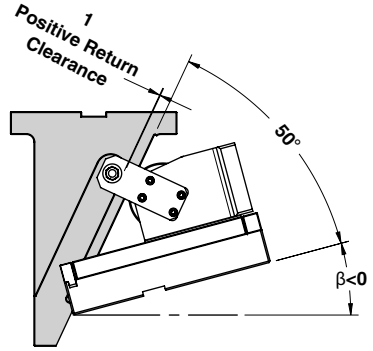
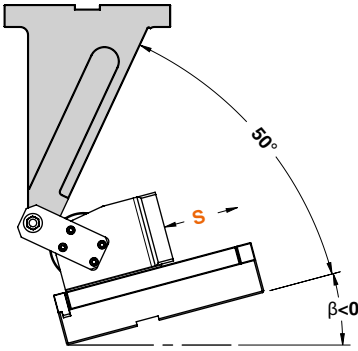


OMCR CODE	ROLLER CAM MODEL	Stroke (mm)	Work Angle	Overall Dimensions (mm)							
		S	$\beta$	$\alpha$	A	B min.	C	D	E	F	
DCRX1520.50.H15	CRX15.050 CRX20.050	48	-15°	65°	200	66	170	140	69	140	
DCRX1520.50.H10		48	-10°	60°	175	59	170	140	69	140	
DCRX1520.50.H05		48	-5°	55°	155	55	170	140	69	140	
DCRX1520.50.000		48	0°	50°	145	52	170	140	69	140	
DCRX1520.50.L05		48	5°	45°	135	50	170	140	69	140	
DCRX1520.50.L10		48	10°	40°	130	49	170	140	69	140	
DCRX1520.50.L15		48	15°	35°	125	49	170	140	69	140	
DCRX1520.50.L20		48	20°	30°	120	49	170	140	69	140	
DCRX1520.50.L25		48	25°	25°	110	49	170	140	69	140	
DCRX1520.50.L30		48	30°	20°	100	50	170	140	69	140	
DCRX1520.50.L35		48	35°	15°	95	52	170	140	69	140	
DCRX1520.50.L40		48	40°	10°	90	53	170	140	69	140	
DCRX1520.50.L45		48	45°	5°	85	50	170	140	69	140	
DCRX1520.50.L50		48	50°	0°	80	0	170	140	69	140	
DCRX1520.80.H15		CRX15.080 CRX15.100 CRX20.080 CRX20.100	78-98	-15°	65°	310	66	220	190	94	190
DCRX1520.80.H10	78-98		-10°	60°	260	59	220	190	94	190	
DCRX1520.80.H05	78-98		-5°	55°	230	55	220	190	94	190	
DCRX1520.80.000	78-98		0°	50°	210	52	220	190	94	190	
DCRX1520.80.L05	78-98		5°	45°	185	50	220	190	94	190	
DCRX1520.80.L10	78-98		10°	40°	180	49	220	190	94	190	
DCRX1520.80.L15	78-98		15°	35°	170	49	220	190	94	190	
DCRX1520.80.L20	78-98		20°	30°	165	49	220	190	94	190	
DCRX1520.80.L25	78-98		25°	25°	150	49	220	190	94	190	
DCRX1520.80.L30	78-98		30°	20°	145	50	220	190	94	190	
DCRX1520.80.L35	78-98		35°	15°	125	52	220	190	94	190	
DCRX1520.80.L40	78-98		40°	10°	115	53	220	190	94	190	
DCRX1520.80.L45	78-98		45°	5°	105	50	220	190	94	190	
DCRX1520.80.L50	78-98		50°	0°	95	52	220	190	94	190	

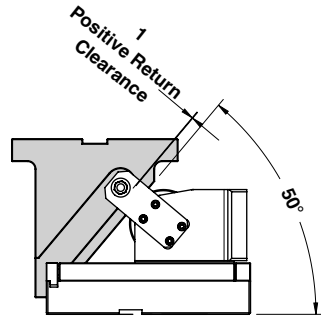
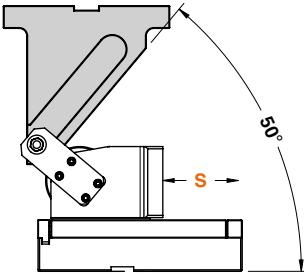


ROLLER CAM DRIVER - TREIBER FÜR ROLLENSCHIEBER - CUNEO PER CAMME A RULLO

FUNCTIONING EXAMPLE FOR WORK ANGLE ( $\beta$ ) FROM  $-5^\circ$  TO  $-15^\circ$



FUNCTIONING EXAMPLE FOR WORK ANGLE ( $\beta$ )= $0^\circ$



FUNCTIONING EXAMPLE FOR WORK ANGLE ( $\beta$ ) FROM  $5^\circ$  TO  $50^\circ$

